



Jefferson County
School District 509J
UNITE. ENGAGE. SOAR.

JEFFERSON COUNTY SCHOOL DISTRICT MADRAS, OREGON

LONG RANGE FACILITY PLAN

DECEMBER 2020



TABLE OF CONTENTS

1. District Facilities Summary	Pages 3-7
Introduction/Overview	Page 4
Existing Facilities Vicinity/Site Plan	Page 5-7
2. Historic Buildings	Page 8-9
3. Community Involvement/Bonds	Page 10-12
Overview/District Bonds	Page 11
Future Bonds	Page 12
4. Educational Standards	Pages 13-38
Class Size and Building Capacity	Page 14
General Standards	Page 15-16
Educational Standards Comparison	Page 17-38
5. Enrollment Demographics	Page 39-45
History of Demographics	Page 40
District Enrollment	Page 40-41
Relationship with Tribe/Economic Overview	Page 41
Employment	Page 42
School Enrollment	Page 43-45
6. Facility Improvement Options	Pages 46-63
Elementary Schools	Page 47-49
K-8 Schools	Page 50-51
Middle School	Page 52
High Schools	Page 53-55
Performing Arts Center	Page 56
Support Service Buildings	Page 57-62
Warm Springs Teacher Housing	Page 63
7. Improvements and Planning	Pages 64-67
Capital Improvements	Page 65
Land Schedule	Page 66
Future Bond	Page 67
8. Appendix	Pages 68-72
Appendix A – Long Range Plan Questions	Pages 69-70
Appendix B – Educational Vision Questions	Pages 71-72

1. DISTRICT FACILITIES SUMMARY

Introduction/Overview

Existing Facilities Vicinity/Site Plan

Jefferson County School District Mission Statement

“Uniting to Empower Culturally-Enhanced Learners to Shape the World! Our school district is unique in that it represents multiple cultures. As the world becomes smaller, understanding and acceptance of multiple cultures help us live and grow in harmony. Therefore, the JCSD recognizes our diversity as a strength to be nurtured.”

INTRODUCTION / OVERVIEW

Jefferson County School District 509-J (JCSD) is one of four public school districts in Jefferson County, Oregon. The JCSD covers approximately 1,470 square miles in Jefferson and Wasco counties. The district currently serves the city of Madras, Metolius, Warm Springs Indian Reservation and Antelope. The educational facilities within the Jefferson County School District include (3) High Schools, (3) Elementary Schools, (1) Middle Schools and (2) K-8 Schools.

In addition to the educational structures, the Jefferson County School District also supports a Performing Arts Center, a support services building, a transportation/maintenance operations office, transportation/maintenance shop and warehouse, a food service warehouse, a grounds maintenance shop and eight Warm Springs Housing Units.

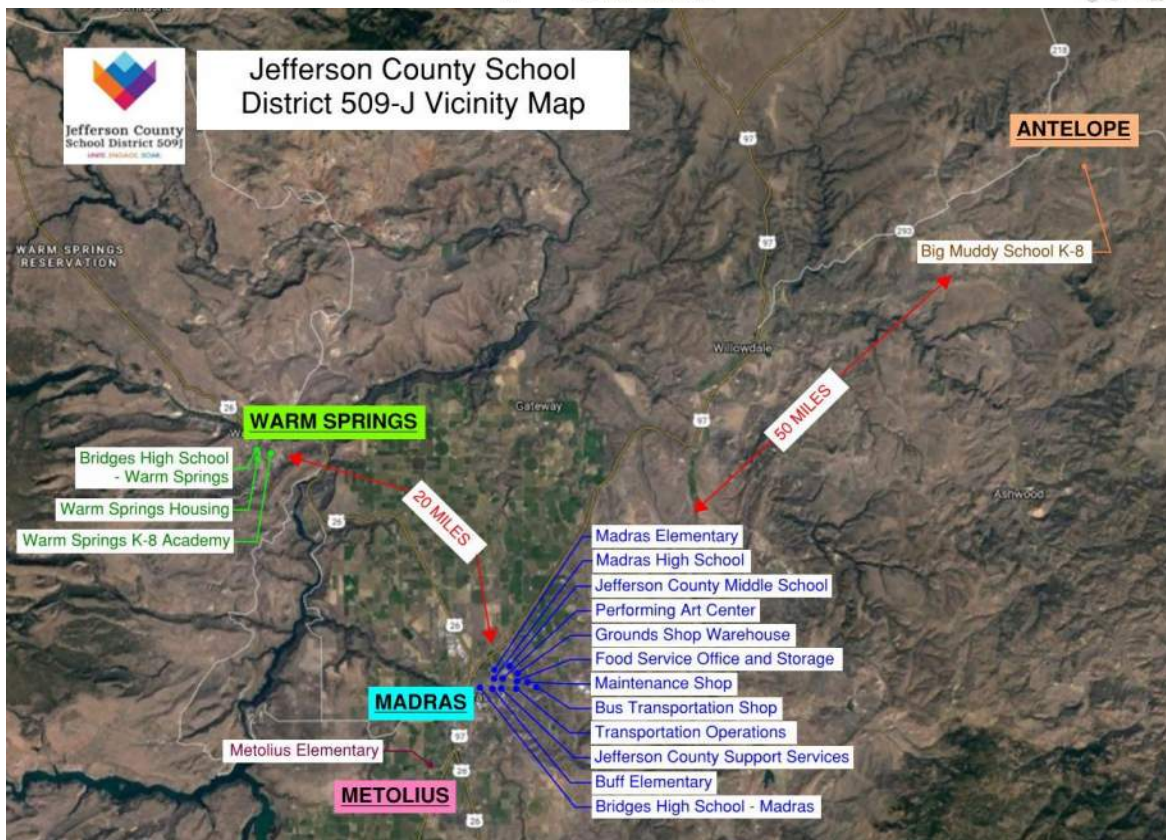


The purpose of the long-range facility plan is to inspect and review the condition of all present facilities and their operating components, review the District's educational standards, examine factors that may impact the future of facilities within the District and student population growth, and provide the District with recommended options for facility upgrades and improvements.

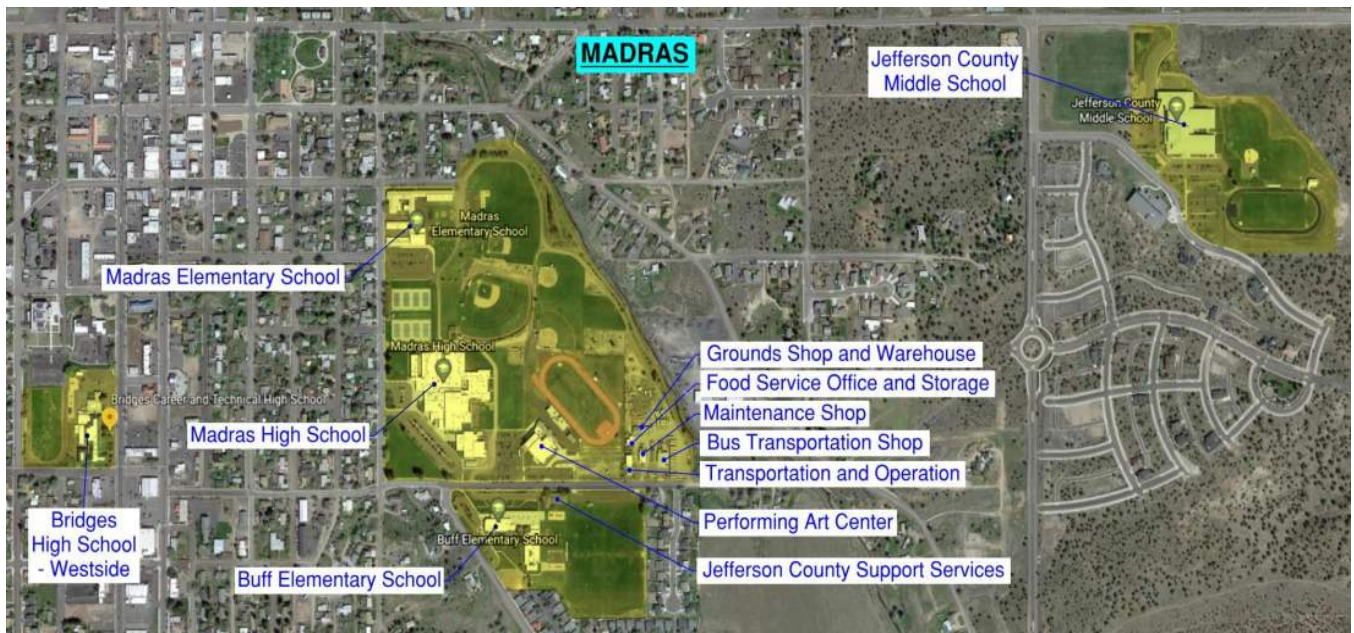
The information presented in this Long-Range Plan and the recently completed Facilities Assessment is intended to provide the Jefferson County School District with a clear picture of current and potential future facilities' needs, allowing Administrators and Board Members to take a proactive approach to future growth and educational priorities.



EXISTING FACILITIES VICINITY, SITE PLAN



JEFFERSON COUNTY SCHOOL VICINITY MAP



MADRAS SCHOOL SITE MAP



WARM SPRINGS SCHOOL SITE MAP



METOLIUS SCHOOL SITE MAP



ANTELOPE SCHOOL SITE MAP

2. HISTORIC BUILDINGS

Summary of Historic Registry

HISTORIC BUILDINGS

Historic Registry

A review of the National Register of Historic Places in Jefferson and Wasco County as provided by the National Park Service at <https://www.nps.gov/subjects/nationalregister/database-research.htm> indicates that none of the District's existing buildings are included on the register. There are no school properties in Madras, Metolius, Warm Springs or Antelope included on the National Register of Historic Places.

Building	Year Built
Buff Elementary	1956
Madras Elementary	1938
Metolius Elementary	1949
Big Muddy School K-8	1980's
Warm Springs K-8 Academy	2014
Jefferson County Middle School	1995
Bridges High School (Westside)	1938
Bridges High School – Warm Springs	2007
Madras High School	1964
Performing Arts Center	2014

3. COMMUNITY INVOLVEMENT / BONDS

Overview/District Bonds

Future Bonds

COMMUNITY INVOLVEMENT / BONDS

Community Involvement Overview

At the completion of the Facility Assessment in summer 2020, Jefferson School District will hold a community survey and on-line forum to engage the community. The survey and forum will focus on educational vision and long-range facility goals. Completed in December 2020, the online forum conveyed the recent facility assessment information and asked for input on future capital projects within the school district. Potential projects were discussed and community input was gathered. See Appendix A for the Long Range Plan Community Survey and Appendix B for the Educational Vision Community Survey.



School District actions based on patron's input/survey:

The response of the community patrons was encouraging. 85 different community surveys were returned to the school district. This information was compiled and presented to the school board for their review and consideration. At this time, no definitive action has been taken on the survey results, but the Jefferson County School Board is weighing future options, addressing community concerns and assessing facility needs. The school district is appreciative of the feedback provided by the many community surveys.



District Bonds

Most communities in Central and Eastern Oregon have successfully passed bonds to fund new facilities. Among those communities was Jefferson County School District 509J (JCSD), who in the past successfully passed two bonds to fund their school facility improvements. Dating back to May 15th, 2001 JCSD passed a bond for \$15.8 million with a 52% approval vote and again on May 15th, 2012 for \$26.7 million with a 55% approval vote.

The table below lists recent elections and results for other school districts in the region according to the Oregon School Board Association (OSBA).

District	Election Date	% Yes	Amount
Ashland School District 5	11/6/2018	69%	\$109 Million
Sweet Home School District 55	5/16/2017	64%	\$4 Million
Bend-La Pine School District	5/16/2017	59%	\$268.3 Million
Sisters School District 006	5/17/2016	52%	\$10.7 Million

Culver School District 4	11/5/2013	50%	\$8.8 Million
Crook County School District	5/21/2013	52%	\$33.5 Million
Redmond School District	5/20/2008	59%	\$110 Million

COMMUNITY INVOLVEMENT / BONDS

Future Bonds

JCSD intends to run a bond in the near future. As the school board continues to gather community input, the District is considering a Fall 2021 election or possibly Spring 2022 election. As the School District continues to examine possible bond projects, the actual bond schedule will be determined.

State of Oregon Election Dates

Year	General Election Dates	Primary Election Dates	Special Elections and Local Bond Measures
2021	November 2 nd	N/A	May 18 th
2022	November 8 th	May 17 th	N/A
2023	November 7 th	N/A	May 16 th
2024	November 5 th	May 21 st	N/A

Source: Swan Lubbers Compliance Specialist/Elections Division for the Oregon Secretary of State

4. EDUCATIONAL STANDARDS

Class Size and Building Capacity

General Standards

Educational Standards Comparison

EDUCATIONAL STANDARDS

Class Size

The average class size in the State of Oregon is 25 students and the average class size for Jefferson County School District is 23 students based on the 2018-2019 Class Size Report issued by the Oregon Department of Education. Although the State of Oregon does not have established class size standards, the following are class size goals for the neighboring State of Idaho (per IDAPA 08.02.02, Section 110) and the current average class sizes based on enrollment from the 2018-2019 academic year:

	State Goal (Idaho):	Jefferson (2018-2019):
Kindergarten:	20 students	23 students
Grades 1-3:	20 students	23-24 students
Grades 4-6:	26 students	25 students
Grades 7-12:	160 teacher load	115 teacher load
All Grades	23/306,242	23/2,759

Building Capacity

Building:	Capacity (Based on 125 sf and 110 sf allotments):
Bridges High School-Madras (54,540 sf) + Bridges High School-Warm Springs (1,792 sf) + Madras High School (138,366 sf) + <u>Madras High School Tech. Dept. (1,932 sf) +</u> Total: 196,630 sf	$\frac{196,630 \text{ sf}}{125 \text{ sf}} = \mathbf{1,573 \text{ Students}}$
Big Muddy School (1,750sf) + Jefferson County Middle School (124,288 sf) + Warm Springs K-8 Academy (82,914 sf) + <u>Warm Springs K-8 Class Room Bld. (3,400 sf) +</u> Total: 212,352 sf	$\frac{212,352 \text{ sf}}{110 \text{ sf}} = \mathbf{1,931 \text{ Students}}$
Buff Elementary School (47,010 sf) Madras Elementary School (52,428 sf) <u>Metolius Elementary School (31,080 sf)</u> Total: 130,518 sf	$\frac{130,518 \text{ sf}}{110 \text{ sf}} = \mathbf{1,187 \text{ Students}}$

EDUCATIONAL STANDARDS

Established Standards

The State of Oregon has not established minimum physical standards for educational facilities; however, the Oregon Department of Education requires that a Long-Range Plan addresses compliance with “established educational standards.”

For the Jefferson County School District Long Range Plan, standards established by the California Department of Education will be utilized as a basis for comparison (Division 1, Chapter 13, “School Facilities Construction.”) The following pages identify the recognized standards and the corresponding tables indicate the level of compliance for each facility, with **0 being “non-compliant” and 5 being “compliant.”**

General Standards

- A. Educational facilities shall provide for the environmental comfort and work efficiency of the occupants.
- B. Educational facilities shall have sufficient classroom space for all curriculum areas in all grade levels.
- C. Educational facilities shall require a practical minimum of maintenance.
- D. Educational facilities shall meet federal, state, and local statutory requirements for structure, fire and public safety.
- E. Educational facilities shall comply with the Americans With Disabilities Act (ADA).

Jefferson County School District – Compliance Scoring

	Buff Elementary School	Madras Elementary School	Metolius Elementary School
A.	5	4	4
B.	5	5	5
C.	5	4	4
D.	5	4	5
E.	4	3	4

	Big Muddy School	Jefferson County Middle School	Warm Springs K-8 Academy
A.	4	5	5
B.	3	5	5
C.	4	5	5
D.	4	5	5
E.	3	5	5

	Bridges High School – Madras Westside	Bridges High School – Warm Springs	Madras High School
A.	3	3	5
B.	4	3	5
C.	5	5	5
D.	4	4	5
E.	2	2	4

EDUCATIONAL STANDARDS | COMPARISON

Site, Playgrounds and Field Areas:

- A. Buses should not pass through parking areas to enter or exit school sites unless a barrier is provided that prevents vehicles from backing directly into the bus loading area.
- B. The parent drop-off/pick up area should be adjacent to the school entrance and separate from bus area and parking.
- C. Foot traffic should not have to pass through entrance driveways to enter school.
- D. Crosswalks must be clearly marked to define desired path to entrance.
- E. Parking stalls must be located so vehicles do not back into bus or loading areas.
- F. Island fencing or curbs should be utilized to separate parking areas from bus or loading areas.
- G. A variety of physical education teaching stations should be available to provide a comprehensive physical education program.
- H. Supervision of playfields should not be obstructed.
- I. Joint use of fields/parks with other public agencies should be explored.
- J. Delivery and service areas shall be located to provide vehicular access that does not jeopardize the safety of students and staff.
- K. Trash enclosure should be fenced or otherwise isolated and away from foot traffic.
- L. Restrooms should be easily accessible from playground and classrooms and require minimum supervision.
- M. Parking spaces should be sufficient for staff, visitors and students.
- N. Campus is secured by fencing.

	Buff Elementary School	Madras Elementary School	Metolius Elementary School
A.	4	3	3
B.	3	3	3
C.	4	3	3
D.	3	3	3
E.	3	3	3
F.	3	2	2
G.	3	3	3
H.	3	3	3
I.	N/A	N/A	N/A
J.	3	3	3
K.	3	3	3
L.	3	2	2
M.	3	3	3
N.	3	3	3

	Big Muddy School	Jefferson County Middle School	Warm Springs K-8 Academy
A.	3	5	5
B.	4	5	5
C.	4	4	4
D.	N/A	4	4
E.	N/A	4	4
F.	N/A	4	4
G.	4	4	4
H.	4	4	4
I.	N/A	N/A	N/A
J.	3	4	4
K.	2	4	4
L.	3	4	4
M.	2	5	5
N.	1	3	3

	Bridges High School – Madras Westside	Bridges High School – Warm Springs	Madras High School
A.	3	3	4
B.	3	3	4
C.	4	4	4
D.	3	N/A	4
E.	3	3	4
F.	3	3	3
G.	4	4	4
H.	4	N/A	4
I.	N/A	N/A	N/A
J.	3	3	3
K.	3	3	3
L.	3	2	3
M.	3	2	4
N.	2	1	3

EDUCATIONAL STANDARDS | COMPARISON

General Classrooms:

- A. Classrooms should have adequate space to perform the curriculum functions for planned enrollment.
- B. General classrooms Grades 1-12 shall be not less than 960 square feet.
- C. Conduit/cabling outlets should be available for technology in each classroom to provide network and stand-alone equipment related to existing and future educational functions.

	Buff Elementary School	Madras Elementary School	Metolius Elementary School
A.	4	4	4
B.	5	4	4
C.	5	4	4

	Big Muddy School	Jefferson County Middle School	Warm Springs K-8 Academy
A.	4	5	5
B.	3	5	5
C.	4	5	5

	Bridges High School – Madras Westside	Bridges High School – Warm Springs	Madras High School
A.	4	4	4
B.	4	2	5
C.	3	3	5

EDUCATIONAL STANDARDS | COMPARISON

Kindergarten Classrooms/Playgrounds:

- A. Kindergarten classrooms shall be not less than 1,350 square feet, including restrooms, storage, teacher preparation, wet and dry areas.
- B. Kindergarten classrooms should allow for supervision in all areas of the classroom and play yard.
- C. Kindergarten play yards should provide a variety of activities for development of large motor skills.
- D. Kindergarten classrooms should be located close to parent drop off and bus loading areas.
- E. Furnishings and equipment should be at appropriate height for Kindergarten-age students.
- F. Restrooms should be self-contained within the Kindergarten classroom or directly adjacent.

	Buff Elementary School	Madras Elementary School	Metolius Elementary School
A.	4	3	3
B.	5	4	4
C.	5	5	5
D.	4	4	4
E.	4	4	4
F.	4	3	3

	Big Muddy School	Jefferson County Middle School	Warm Springs K-8 Academy
A.	2	5	5
B.	5	5	5
C.	4	5	5
D.	3	3	3
E.	4	4	4
F.	3	4	4

EDUCATIONAL STANDARDS | COMPARISON

Special Education Classrooms/Areas:

- A. Special Education classrooms should be at least the same size as general classrooms and be properly equipped for the students who will occupy the space, for their age and type of disability.
- B. Special Education classrooms should be integrated with regular education classrooms.
- C. A conference area should be provided to conduct annual individualized education program meetings for each special education student.

	Buff Elementary School	Madras Elementary School	Metolius Elementary School
A.	4	4	4
B.	4	4	4
C.	4	4	4

	Big Muddy School K-8	Jefferson County Middle School	Warm Springs K-8 Academy
A.	5	5	5
B.	4	4	4
C.	5	5	5

	Bridges High School – Madras Westside	Bridges High School – Warm Springs	Madras High School
A.	4	4	4
B.	4	4	4
C.	4	4	4

EDUCATIONAL STANDARDS | COMPARISON

Science and Consumer Economics Laboratories:

- A. Science laboratories should be at least 1,300 square feet including storage and teacher prep areas.
- B. Science laboratories must accommodate necessary safety equipment and proper storage of supplies and hazardous materials—secure storage must be provided for volatile, flammable, and corrosive chemicals.
- C. Chemical storage areas should have appropriate ventilation for hazardous materials that emit noxious fumes.
- D. Exhaust fume hoods, eye washes and deluge showers should be provided.
- E. Laboratories should provide capability for technology which complements the curriculum.
- F. Consumer Economics classrooms/equipment shall reflect current home food preparation practices and/or commercial food preparation simulation.
- G. There is the capability for technology which complements the curriculum.
- H. There is storage for student projects and supplies.

	Big Muddy School K-8	Jefferson County Middle School	Warm Springs K-8 Academy
A.	2	4	4
B.	2	4	4
C.	N/A	3	3
D.	N/A	3	4
E.	2	4	4
F.	2	3	3
G.	3	4	4
H.	3	4	4

	Bridges High School – Madras Westside	Bridges High School – Warm Springs	Madras High School
A.	2	N/A	5
B.	2	N/A	4
C.	2	N/A	4
D.	2	N/A	4
E.	2	N/A	4
F.	2	3	4
G.	3	4	4
H.	3	4	5

EDUCATIONAL STANDARDS | COMPARISON

Industrial and Technology/Education Laboratories:

- A. Room is provided for movement of students around fixed learning stations.
- B. Flexible stations with sufficient outlets and power source for industrial type equipment is provided.
- C. Space is provided for various simulations of job-related experiences and laboratory work stations. There is capability to utilize technology which complements the curriculum, such as computer-aided graphics, electronics and specialized tools.
- D. There is lecture area within each laboratory or near the laboratory area where appropriate.
- E. There are accommodations for necessary health and safety equipment, such as fire extinguisher and first aid kit.
- F. Secured storage areas for volatile, flammable and corrosive chemicals and cleaning agents are provided where appropriate.
- G. There are properly designated areas with appropriate ventilation for the use of hazardous material that emit noxious fumes or excessive dust particles.
- H. Proper storage and removal access for hazardous waste materials is provided in each laboratory using such materials.

	Buff Elementary School	Madras Elementary School	Metolius Elementary School
A.	4	4	4
B.	4	4	4
C.	4	3	3
D.	4	4	4
E.	4	4	4
F.	4	3	3
G.	4	3	3
H.	2	4	4

	Big Muddy School K-8	Jefferson County Middle School	Warm Springs K-8 Academy
A.	2	4	4
B.	3	4	4
C.	3	5	5
D.	3	4	4
E.	4	4	4
F.	N/A	4	4
G.	N/A	3	3
H.	N/A	4	4

	Bridges High School – Madras Westside	Bridges High School – Warm Springs	Madras High School
A.	4	2	4
B.	4	4	4
C.	3	4	4
D.	3	N/A	4
E.	4	4	4
F.	3	N/A	4
G.	3	3	4
H.	N/A	N/A	4

EDUCATIONAL STANDARDS | COMPARISON

Computer Instructional Support:

- A. If a standard classroom is being designated as a computer laboratory, the size should be at least 960 square feet.
- B. Room is provided for movement of students around fixed learning stations.
- C. Sufficient outlets, power sources and network links for the amount of equipment are provided.
- D. Proper ventilation is provided.
- E. Proper equipment security is provided.
- F. Lighting minimizes screen glare and eye strain.

	Buff Elementary School	Madras Elementary School	Metolius Elementary School
A.	4	4	4
B.	4	4	4
C.	5	4	4
D.	4	4	4
E.	4	4	4
F.	4	5	5

	Big Muddy School K-8	Jefferson County Middle School	Warm Springs K-8 Academy
A.	N/A	4	4
B.	2	4	4
C.	3	5	5
D.	3	4	4
E.	N/A	4	4
F.	3	5	5

	Bridges High School - Madras Westside	Bridges High School – Warm Springs	Madras High School
A.	3	3	4
B.	4	3	4
C.	4	3	4
D.	4	4	4
E.	3	3	3
F.	4	5	5

EDUCATIONAL STANDARDS | COMPARISON

Gymnasium/Locker Room:

- A. Gymnasium shall accommodate multiple use activities in accordance with planned enrollment.
- B. Gymnasium is secured from other parts of the campus for evening and weekend events or for public use purposes.
- C. The shower/locker area is of sufficient size to allow students to shower and dress each period.
- D. Toilets are available for the public in facilities intended for shared community use other than locker/shower areas.
- E. Office space is provided for physical education teachers.
- F. Space is available for specialized age-appropriate physical education activities.
- G. Space is available to allow District to comply with ORS 329.498 mandated minimum physical education requirements (150 minutes per week K-5, 225 minutes per week 6-8).

	Buff Elementary School	Madras Elementary School	Metolius Elementary School
A.	4	4	4
B.	4	3	3
C.	N/A	N/A	N/A
D.	3	3	3
E.	2	2	2
F.	3	3	3
G.	4	4	4

	Big Muddy School K-8	Jefferson County Middle School	Warm Springs K-8 Academy
A.	N/A	4	4
B.	N/A	4	4
C.	N/A	4	4
D.	N/A	4	4
E.	N/A	5	5
F.	N/A	4	4
G.	N/A	4	4

	Bridges High School – Madras Westside	Bridges High School – Warm Springs	Madras High School
A.	5	N/A	5
B.	3	N/A	4
C.	4	N/A	5
D.	4	N/A	4
E.	4	N/A	5
F.	4	N/A	4
G.	4	N/A	4

EDUCATIONAL STANDARDS | COMPARISON

Multi-Purpose/Cafeteria:

- A. Multipurpose/cafeteria area (indoor or outdoor) shall be adequately sized and flexibly designed to protect students from the elements and to allow all students adequate eating time during each lunch period and to accommodate such uses as physical education activities, assemblies, and extracurricular activities:
- B. Tables and benches or seats are designed to maximize space and allow flexibility in the use of the space.
- C. The location is easily accessible for student and community use, but is close to street for delivery truck access. Stage/platform may have a dividing wall to be used for instructional purposes but is not intended as a classroom.
- D. Area for the cafeteria line is designed for the flow of traffic for each lunch period.
- E. Design of kitchen reflects its planned function; e.g., whether for food preparation or warming only.
- F. Space is available for refrigeration and preparation of foods to accommodate maximum number of students planned for the school.
- G. Office, changing, and restroom area for food preparation staff is available and shall comply with local department of health requirements.
- H. Ceiling height allows for clearance of light fixtures for physical education activities.

	Buff Elementary School	Madras Elementary School	Metolius Elementary School
A.	5	4	4
B.	4	4	4
C.	4	3	4
D.	4	3	4
E.	4	4	4
F.	4	3	3
G.	4	3	3
H.	5	5	5

	Big Muddy School K-8	Jefferson County Middle School	Warm Springs K-8 Academy
A.	N/A	5	5
B.	N/A	4	4
C.	N/A	4	4
D.	N/A	5	5
E.	N/A	4	4
F.	N/A	4	4
G.	N/A	3	4
H.	N/A	5	5

	Bridges High School – Madras Westside	Bridges High School – Warm Springs	Madras High School
A.	5	N/A	5
B.	4	N/A	4
C.	3	N/A	4
D.	4	N/A	5
E.	3	N/A	4
F.	4	N/A	4
G.	3	N/A	4
H.	5	N/A	5

EDUCATIONAL STANDARDS | COMPARISON

Administrative Office:

The administrative office shall have sufficient square footage to accommodate the number of staff for the maximum enrollment planned for the school consistent with the master plan for the school district and shall be designed to efficiently conduct the administrative functions, specifically:

- A. Students have direct confidential access to pupil personnel area.
- B. Counter tops are accessible for an age-appropriate population both at a standing and wheelchair level.
- C. Clerical staff have a clear view of nurse's office.
- D. The nurse's office has a bathroom separate from staff bathroom(s) in administration area.
- E. Space for private conference and waiting area is available.
- F. Capability for such computer networking functions as attendance accounting and communicating to each classroom is considered.
- G. A faculty workroom is available for a staff size proportionate to the student population.

	Buff Elementary School	Madras Elementary School	Metolius Elementary School
A.	4	4	4
B.	4	4	4
C.	4	4	4
D.	4	3	3
E.	4	4	4
F.	4	4	4
G.	4	4	4

	Big Muddy School K-8	Jefferson County Middle School	Warm Springs K-8 Academy
A.	1	4	4
B.	3	4	4
C.	N/A	4	4
D.	N/A	4	4
E.	2	4	4
F.	3	4	4
G.	N/A	4	4

	Bridges High School – Madras Westside	Bridges High School – Warm Springs	Madras High School
A.	3	1	4
B.	4	3	4
C.	4	N/A	4
D.	4	N/A	4
E.	4	2	4
F.	4	3	4
G.	4	N/A	4

EDUCATIONAL STANDARDS | COMPARISON

Library/Media Center and Technology:

- A. Library space shall be proportional to the maximum planned school enrollment. The size shall be no less than 960 square feet. However, to allow adaptation for changing technology and communication systems, the following is recommended:
 - two square feet per unit of a.d.a. (average daily attendance) for elementary;
 - three square feet per unit of a.d.a. for middle or junior high (grades 6-8);
 - four square feet per unit of a.d.a. for high school. In addition:
- B. Provide security for technology and media equipment.
- C. Space and capability for computer terminals is considered for student use, research and report writing.
- D. Visual supervision from circulation desk is available to study areas, stack space, and student work centers.
- E. Design for open and closed-circuit television, dedicated phone line, electrical outlets for stand-alone computers, and conduit connecting all instructional areas is considered.

	Buff Elementary School	Madras Elementary School	Metolius Elementary School
A.	4	4	3
B.	3	3	3
C.	3	3	3
D.	3	3	3
E.	N/A	N/A	N/A

	Big Muddy School K-8	Jefferson County Middle School	Warm Springs K-8 Academy
A.	N/A	4	5
B.	N/A	4	4
C.	N/A	4	4
D.	N/A	5	5
E.	N/A	4	4

	Bridges High School – Madras Westside	Bridges High School – Warm Springs	Madras High School
A.	3	N/A	4
B.	3	N/A	4
C.	3	N/A	4
D.	4	N/A	5
E.	3	N/A	4

EDUCATIONAL STANDARDS | COMPARISON

Lighting:

Light design shall generate an illumination level that provides comfortable and adequate visual conditions in each educational space, specifically:

- A. Ceilings and walls are white or light colored for high reflectance unless function of space dictates otherwise.
- B. Lights do not produce glare or block the line of sight.
- C. Window treatment allows entrance of daylight but does not cause excessive glare or heat gain.
- D. Fixtures provide an even light distribution throughout the learning area.

	Buff Elementary School	Madras Elementary School	Metolius Elementary School
A.	5	5	5
B.	4	4	4
C.	4	4	4
D.	4	4	4

	Big Muddy School K-8	Jefferson County Middle School	Warm Springs K-8 Academy
A.	4	5	5
B.	4	5	5
C.	4	4	4
D.	4	4	4

	Bridges High School – Madras Westside	Bridges High School – Warm Springs	Madras High School
A.	5	4	5
B.	4	4	4
C.	4	4	4
D.	3	4	4

EDUCATIONAL STANDARDS | COMPARISON

Acoustical:

Hearing conditions shall complement the educational function by good sound control. Specifically:

- A. The sound-conditioning in a given space is acoustically comfortable to permit instructional activities to take place in the room.
- B. Sound is transmitted without interfering with adjoining instructional spaces.
- C. The ventilation system does not transmit an inordinate sound level to the instructional program.

	Buff Elementary School	Madras Elementary School	Metolius Elementary School
A.	4	4	4
B.	4	4	4
C.	4	3	4

	Big Muddy School K-8	Jefferson County Middle School	Warm Springs K-8 Academy
A.	3	4	4
B.	2	4	4
C.	4	4	4

	Bridges High School – Madras Westside	Bridges High School – Warm Springs	Madras High School
A.	4	3	4
B.	4	2	4
C.	4	4	4

EDUCATIONAL STANDARDS | COMPARISON

Plumbing:

- A. Restroom stalls shall be sufficient to accommodate the maximum planned enrollment and shall be located on campus to allow for supervision.
- B. Outdoor restrooms having direct outside access are located in areas that are visible from playground and easily supervised.

	Buff Elementary School	Madras Elementary School	Metolius Elementary School
A.	4	4	4
B.	3	N/A	N/A

	Big Muddy School K-8	Jefferson County Middle School	Warm Springs K-8 Academy
A.	3	4	4
B.	N/A	4	4

	Bridges High School – Madras Westside	Bridges High School – Warm Springs	Madras High School
A.	3	3	4
B.	N/A	N/A	3

5. ENROLLMENT DEMOGRAPHICS

History of Demographics

District Enrollment

Relationship with Tribe

Economic Overview

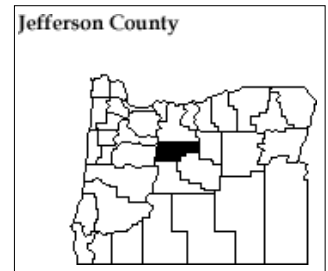
Employment

School Enrollment

ENROLLMENT DEMOGRAPHICS

General Description

The District was formed in 1963 and is located in Jefferson County (the "County") with a small portion in Wasco County. The District's boundaries include the City of Madras, the Confederated Tribes of the Warm Springs Reservation of Oregon and unincorporated areas of Jefferson and Wasco Counties.



From 2010 until 2020, Jefferson County School District hasn't experienced significant growth or decline of student population (Per the Oregon Department of Education Facilities Database). The overall population of Madras, Metolius, Warm Springs and Antelope OR has not undergone much change in that same year range based on the net migration flows for Jefferson County (U.S. Census Bureau ACS Demographic and Housing Estimates 2006-2010 and 2012-2016). It is reasonable to assume that the student population of Jefferson County School District will not grow or decline a significant number of students each year.

History of Demographics

Historical data have been collected from generally accepted standard sources, usually from public bodies. This statement includes information on Jefferson County and the City of Madras. The following table shows the historical population for the State, the County and the City of Madras:

Population

July 1 ⁽¹⁾	State of Oregon	Jefferson County	City of Madras
2019	4,236,400	23,840	6,380
2018	4,195,300	23,560	6,345
2017	4,141,100	23,190	6,300
2016	4,076,350	22,790	6,275
2015	4,013,845	22,445	6,265
2014	3,962,710	22,205	6,260
2013	3,919,020	22,040	6,255
April 1 ⁽²⁾			
2010	3,831,074	21,720	6,046
2000	3,421,399	19,009	5,078
1990	2,842,321	13,676	3,443

(1) Source: Center for Population Research and Census, Portland State University.

(2) Source: U.S. Census Count on April 1.

District Enrollment

The District operates two high schools, one middle school, two K through eighth grade academies, and four elementary schools. Historical and projected enrollments are shown in the following table:

Historical and Projected Enrollment

Fiscal Year	Average Daily Membership(w) ⁽¹⁾	Enrollment ⁽²⁾	Teaching Staff ⁽³⁾	Student to Teacher Ratio
2021 ⁽⁴⁾	3,773	2,891	210.0	13.8
2020 ⁽⁵⁾	3,888	2,963	200.0	14.8
2019	3,829	2,951	192.0	15.4
2018	3,881	2,992	190.0	15.7
2017	3,911	2,983	182.0	16.4
2016	3,819	2,919	179.5	16.3
2015	3,717	2,973	180.0	16.5

(1) Weighted Average Daily Membership is the enrollment figure, adjusted for part-time students and students with special needs, that is used to allocate revenues appropriated by the State to school districts.

(2) Enrollment is the number of students attending classes.

(3) Full-time equivalent licensed employees. Includes classroom, music, physical education, special education teachers, librarians and counselors.

(4) Projected.

(5) Preliminary, subject to change.

Source: Oregon Department of Education and Jefferson County School District No. 509J.

Relationship between The Confederated Tribes of the Warm Springs Reservation of Oregon and the District

An Interagency Education Agreement was signed in July 1, 2011 to supplement a Memorandum of Understanding for Education of Tribal Students signed by the District, The Confederated Tribes of the Warm Springs Reservation of Oregon (the "Tribe") and the Bureau of Indian Affairs in July 1986.

Currently, one Tribal official is an elected member of the District's Board; also, Tribal officials and Warm Springs community members have served on many District committees to assist with decision making, including staffing, curriculum, budgeting, and facility development. There are 1,065 Native American students enrolled in District schools with most attending Warm Springs K-8 Academy, Bridges High School, and Madras High School.

Economic Overview

The County's economy is based on government, agriculture, forest products, and tourism. Farming is the primary industry and contributes a large portion of the income produced in the County. The County has rangelands and an industrial base related to forest products. The Confederated Tribes of the Warm Springs Reservation of Oregon, which operates a power generation facility, hotel, casino and sawmill, is one of the largest employers in Jefferson County. Other major employers include the District, Deer Ridge Correctional Institute and St. Charles Health System Madras.

In 2019, government jobs accounted for 36.7 percent of total non-farm employment in the County, while manufacturing accounted for 19.3 percent, trade, transportation and utilities 13 percent, education and health services 10 percent, and leisure and hospitality 10 percent.

According to the Census of Agriculture conducted by the United State Department of Agriculture, the market value of agricultural products sold in the County in 2017 totaled \$67,438,000. Crop sales accounted for 81 percent of the market value, and livestock sales accounted for the remaining 19 percent of the market value. There were 397 farms operating on 792,920 acres of land. Major agricultural commodities produced in the region include hay,

vegetables, melons, potatoes, sweet potatoes, grains, oilseeds, dry beans, dry peas, and cattle.

Employment

Non-farm Employment within the County is described in the following table:

Major Employers in the County

Company	Service	Location	No. Employees
Bright Wood Corporation	Wood products	Madras	1,138
Confederated Tribes of Warm Springs Reservation	Power generation/hotel motel/timber	Warm Springs	1,100
Jefferson County School District 509J	Education	Madras	500
Keith Manufacturing Co	Conveyors and conveying equipment	Madras	207
St. Charles Health System Madras	Healthcare	Madras	180
Jefferson County	Government	County-wide	169
Deer Ridge Correctional Institution	Correctional Institute	Madras	159
Federal Government	Government	County-wide	120
Warm Springs Health Service	Healthcare	Warm Springs	100
Culver School District No. 4	Education	Culver	90
W&S Ventures, LLC	Staffing services	Warm Springs	88
Safeway	Grocery	Madras	71
Oregon Department of Human Services	Government	County-wide	60
Erickson's Thriftway	Grocery	Madras	55
Wilbur-Ellis Co	Fertilizer and agriculture chemicals	Madras	55
High Desert Aggregate & Paving, Inc.	Street paving contractor	Terrebonne	50
The Sweetwater Company Inc.	Bottle water	Culver	49
Albina Holdings, Inc.	Manufacturing	Madras	48
BNSF Railway Company	Rail transportation	Madras	46
Bi-Mart Corporation	Retail	Madras	43
Warm Springs Composite Products	Wood products	Warm Springs	42
Oregon Child Development Coalition, Inc.	Early childhood education	Madras	37

Note: Total number of employees may include full, part-time, temporary and seasonal employment.

Source: Economic Development for Central Oregon "2019 Central Oregon Profile; Central Oregon's Top 50 Private Employers"; Oregon Employment Department; November 2019 data; D&B Hoover's, January 2020.

The following table represents historical tax information for the District.

Taxable Property Values

Fiscal Year	M5 Real Market Value ⁽¹⁾	Total Assessed Valuation	Urban Renewal Excess ⁽²⁾	AV Used to Calculate Rates ⁽³⁾
2020	\$ 1,668,931,860	\$ 1,104,926,246	\$ 33,020,744	\$ 1,071,905,502
2019	1,516,186,422	1,055,779,058	30,416,094	1,025,362,964
2018	1,351,122,435	1,019,433,886	26,675,246	992,758,640
2017	1,227,277,647	986,958,873	24,278,096	962,680,777
2016	1,152,298,861	965,757,522	23,978,363	941,779,159
2015	1,094,489,850	917,833,130	22,317,792	895,515,338

(1) Value represents the Real Market Value of taxable properties, including the reduction in Real Market Value of specially assessed properties such as farm and forestland. This value is also commonly referred to as the Measure 5 Real Market Value by county assessors.

(2) Includes City of Madras urban renewal areas.

(3) Assessed value of property in the District on which the Permanent Rate is applied to derive *ad valorem* property taxes, excluding urban renewal, exempt property within enterprise zones and any other offsets.

Note: General obligation bonds may be levied on the Total Assessed Value, the Assessed Value Used to Calculate Rates, or a combination of the two, depending on the type of urban renewal plan and the original approval date of the bond issue.

School Enrollment

October 1st, 2020 Enrollment Numbers

School: Buff Elementary School Term: 20-21 Year

Enrollment Summary: Federal Ethnicity and Race Report as of 10/01/2020 (Reg)

Buff Elementary School

View:

Federal Ethnicity and Race

Students:

☒ All Active Enrollments
 ☐ Current Selection

Date:

10/01/2020

Grade Level	Total in Grade	(A) Asian	(B) Black or African American	(I) American Indian or Alaska Native	(P) Native Hawaiian or Other Pac Islander	(W) White	Hispanic/Latino	Two or More Race Categories	Unspecified
0	48 28 / 20	0 0 / 0	0 0 / 0	5 1 / 4	0 0 / 0	14 8 / 6	27 17 / 10	2 2 / 0	0 0 / 0
1	47 24 / 23	0 0 / 0	0 0 / 0	3 2 / 1	0 0 / 0	28 11 / 9	24 11 / 13	0 0 / 0	0 0 / 0
2	55 32 / 23	0 0 / 0	1 1 / 0	4 2 / 2	0 0 / 0	21 13 / 8	26 14 / 12	3 2 / 1	0 0 / 0
3	46 25 / 21	0 0 / 0	0 0 / 0	6 4 / 2	0 0 / 0	20 8 / 12	20 13 / 7	0 0 / 0	0 0 / 0
4	45 26 / 19	0 0 / 0	0 0 / 0	1 1 / 0	0 0 / 0	14 8 / 6	27 15 / 12	3 2 / 1	0 0 / 0
5	45 30 / 15	0 0 / 0	0 0 / 0	1 1 / 0	1 1 / 0	16 13 / 3	26 15 / 11	1 0 / 1	0 0 / 0
Total	286 165 / 121	0 0 / 0	1 1 / 0	20 11 / 9	1 1 / 0	105 61 / 44	150 85 / 65	9 6 / 3	0 0 / 0

The Federal Ethnicity and Race view displays aggregate student data as required by the Federal Ethnicity and Race Categories from the U.S. Department of Education. See the help for more information.

School: Madras Elementary School Term: 20-21 Year

Enrollment Summary: Federal Ethnicity and Race Report as of 10/01/2020 (Reg)

Madras Elementary School

View:

Federal Ethnicity and Race

Students:

All Active Enrollments

Current Selection

Date:

10/1/2020

Grade Level	Total In Grade	(A) Asian	(B) Black or African American	(I) American Indian or Alaska Native	(P) Native Hawaiian or Other Pac Islander	(W) White	Hispanic/Latino	Two or More Race Categories	Unspecified
0	55 30 / 25	0 0 / 0	0 0 / 0	3 3 / 0	0 0 / 0	21 11 / 10	28 15 / 13	3 1 / 2	0 0 / 0
1	44 17 / 27	0 0 / 0	0 0 / 0	3 2 / 1	2 0 / 2	19 5 / 14	19 10 / 9	1 0 / 1	0 0 / 0
2	59 28 / 31	1 1 / 0	0 0 / 0	4 3 / 1	0 0 / 0	26 11 / 15	27 12 / 15	1 1 / 0	0 0 / 0
3	61 29 / 32	0 0 / 0	1 1 / 0	6 4 / 2	0 0 / 0	18 9 / 9	32 15 / 17	4 0 / 4	0 0 / 0
4	55 29 / 26	0 0 / 0	0 0 / 0	4 2 / 2	0 0 / 0	21 11 / 10	28 14 / 14	2 2 / 0	0 0 / 0
5	61 28 / 33	0 0 / 0	0 0 / 0	11 5 / 6	0 0 / 0	32 15 / 17	17 7 / 10	1 1 / 0	0 0 / 0
Total	335 161 / 174	1 1 / 0	1 1 / 0	31 19 / 12	2 0 / 2	137 62 / 75	151 73 / 78	12 5 / 7	0 0 / 0

The Federal Ethnicity and Race view displays aggregate student data as required by the Federal Ethnicity and Race Categories from the U.S. Department of Education. See the help for more information.

School: Metolius Elementary School Term: 20-21 Year

Enrollment Summary: Federal Ethnicity and Race Report as of 10/01/2020 (Reg)

Metolius Elementary School

View:

Federal Ethnicity and Race

Students:

☒ All Active Enrollments
 ☐ Current Selection

Date:

10/01/2020

Grade Level	Total In Grade	(A) Asian	(B) Black or African American	(I) American Indian or Alaska Native	(P) Native Hawaiian or Other Pac Islander	(W) White	Hispanic/Latino	Two or More Race Categories	Unspecified
0	45 22 / 23	0 0 / 0	1 0 / 1	3 2 / 1	0 0 / 0	22 10 / 12	19 10 / 9	0 0 / 0	0 0 / 0
1	37 16 / 21	0 0 / 0	0 0 / 0	7 3 / 4	0 0 / 0	15 5 / 10	15 8 / 7	0 0 / 0	0 0 / 0
2	50 29 / 21	0 0 / 0	0 0 / 0	2 1 / 1	0 0 / 0	24 16 / 8	23 12 / 11	1 0 / 1	0 0 / 0
3	43 22 / 21	0 0 / 0	0 0 / 0	5 1 / 4	0 0 / 0	15 8 / 7	21 13 / 8	2 0 / 2	0 0 / 0
4	45 24 / 21	1 1 / 0	0 0 / 0	4 2 / 2	0 0 / 0	10 2 / 8	28 18 / 10	2 1 / 1	0 0 / 0
5	42 23 / 19	0 0 / 0	1 1 / 0	3 2 / 1	0 0 / 0	14 8 / 6	22 11 / 11	2 1 / 1	0 0 / 0
Total	262 136 / 126	1 1 / 0	2 1 / 1	24 11 / 13	0 0 / 0	100 49 / 51	128 72 / 56	7 2 / 5	0 0 / 0

The Federal Ethnicity and Race view displays aggregate student data as required by the Federal Ethnicity and Race Categories from the U.S. Department of Education. See the help for more information.

Enrollment Summary: Federal Ethnicity and Race Report as of 10/01/2020 (Reg)

Big Muddy School

View:

Federal Ethnicity and Race

Students:

All Active Enrollments

Current Selection

Date:

10/01/2020

Grade Level	Total in Grade	(A) Asian	(B) Black or African American	(I) American Indian or Alaska Native	(P) Native Hawaiian or Other Pac Islande	(W) White	Hispanic/Latino	Two or More Race Categories	Unspecified
0	3 0/3	0 0/0	0 0/0	0 0/0	0 0/0	3 0/3	0 0/0	0 0/0	0 0/0
1	1 1/0	0 0/0	0 0/0	0 0/0	0 0/0	1 0/0	0 0/0	0 0/0	0 0/0
2	1 1/0	0 0/0	0 0/0	0 0/0	0 0/0	1 0/0	0 0/0	0 0/0	0 0/0
3	0 0/0	0 0/0	0 0/0	0 0/0	0 0/0	0 0/0	0 0/0	0 0/0	0 0/0
4	1 1/0	0 0/0	1 1/0	0 0/0	0 0/0	0 0/0	0 0/0	0 0/0	0 0/0
5	1 0/1	0 0/0	0 0/0	0 0/0	0 0/0	1 0/1	0 0/0	0 0/0	0 0/0
6	0 0/0	0 0/0	0 0/0	0 0/0	0 0/0	0 0/0	0 0/0	0 0/0	0 0/0
7	2 2/0	0 0/0	0 0/0	0 0/0	0 0/0	2 0/0	0 0/0	0 0/0	0 0/0
8	1 0/1	0 0/0	0 0/0	0 0/0	0 0/0	1 0/1	0 0/0	0 0/0	0 0/0
Total	10 5/5	0 0/0	1 1/0	0 0/0	0 0/0	9 4/5	0 0/0	0 0/0	0 0/0

The Federal Ethnicity and Race view displays aggregate student data as required by the Federal Ethnicity and Race Categories from the U.S. Department of Education. See the help for more information.

School: Jefferson County Middle School Term: 20-21 Quarter 1

Enrollment Summary: Federal Ethnicity and Race Report as of 10/01/2020 (A)

Jefferson County Middle School

View:

Federal Ethnicity and Race

Students:

☒ All Active Enrollments

☐ Current Selection

Date: 10/01/2020

Grade Level	Total in Grade	(A) Asian	(B) Black or African American	(I) American Indian or Alaska Native	(P) Native Hawaiian or Other Pac Islande	(W) White	Hispanic/Latino	Two or More Race Categories	Unspecified
6	160 86 / 74	1 0 / 1	0 0 / 0	9 4 / 5	0 0 / 0	66 34 / 32	78 44 / 34	6 4 / 2	0 0 / 0
7	142 74 / 68	0 0 / 0	0 0 / 0	18 6 / 12	1 1 / 0	48 30 / 18	70 33 / 37	5 4 / 1	0 0 / 0
8	153 84 / 69	1 0 / 1	2 1 / 1	10 5 / 5	1 1 / 0	59 33 / 26	80 44 / 36	0 0 / 0	0 0 / 0
Total	455 244 / 211	2 0 / 2	2 1 / 1	37 15 / 22	2 2 / 0	173 97 / 76	228 121 / 107	11 8 / 3	0 0 / 0

The Federal Ethnicity and Race view displays aggregate student data as required by the Federal Ethnicity and Race Categories from the U.S. Department of Education. See the help for more information.

School: Warm Springs K-8 Academy Term: 20-21 Quarter 1

Enrollment Summary: Federal Ethnicity and Race Report as of 10/01/2020 (A)

Warm Springs K-8 Academy

View:

Federal Ethnicity and Race

Students:

All Active Enrollments

Current Selection

Date:

10/01/2020

Grade Level	Total in Grade	(A) Asian	(B) Black or African American	(I) American Indian or Alaska Native	(P) Native Hawaiian or Other Pac Islande	(W) White	Hispanic/Latino	Two or More Race Categories	Unspecified
0	61 39 / 22	0 0 / 0	0 0 / 0	51 33 / 18	2 1 / 1	2 1 / 1	5 4 / 1	1 0 / 1	0 0 / 0
1	51 25 / 26	0 0 / 0	0 0 / 0	43 20 / 23	0 0 / 0	0 0 / 0	4 3 / 1	4 2 / 2	0 0 / 0
2	65 38 / 27	0 0 / 0	0 0 / 0	57 35 / 22	1 0 / 1	1 1 / 0	3 2 / 1	3 0 / 3	0 0 / 0
3	66 36 / 30	0 0 / 0	0 0 / 0	61 34 / 27	0 0 / 0	0 0 / 0	4 2 / 2	1 0 / 1	0 0 / 0
4	88 42 / 46	0 0 / 0	0 0 / 0	75 39 / 36	0 0 / 0	3 1 / 2	8 1 / 7	2 1 / 1	0 0 / 0
5	70 38 / 32	0 0 / 0	0 0 / 0	58 31 / 27	0 0 / 0	0 0 / 0	5 3 / 2	7 4 / 3	0 0 / 0
6	59 41 / 18	0 0 / 0	0 0 / 0	53 36 / 17	0 0 / 0	0 0 / 0	3 2 / 1	3 3 / 0	0 0 / 0
7	57 29 / 28	0 0 / 0	0 0 / 0	53 28 / 25	1 0 / 1	0 0 / 0	3 1 / 2	0 0 / 0	0 0 / 0
8	68 40 / 28	0 0 / 0	0 0 / 0	64 38 / 26	0 0 / 0	0 0 / 0	3 2 / 1	1 0 / 1	0 0 / 0
Total	585 328 / 257	0 0 / 0	0 0 / 0	515 294 / 221	4 1 / 3	6 3 / 3	38 20 / 18	22 10 / 12	0 0 / 0

The Federal Ethnicity and Race view displays aggregate student data as required by the Federal Ethnicity and Race Categories from the U.S. Department of Education. See the help for more information.

Enrollment Summary: Federal Ethnicity and Race Report as of 10/01/2020 (A)

Bridges High School

View: Federal Ethnicity and Race		Students: <input checked="" type="radio"/> All Active Enrollments <input type="radio"/> Current Selection		Date: 10/01/2020	
-------------------------------------	--	---	--	---------------------	--

Grade Level	Total in Grade	(A) Asian	(B) Black or African American	(I) American Indian or Alaska Native	(P) Native Hawaiian or Other Pac Islander	(W) White	Hispanic/Latino	Two or More Race Categories	Unspecified
9	0 0 / 0	0 0 / 0	0 0 / 0	0 0 / 0	0 0 / 0	0 0 / 0	0 0 / 0	0 0 / 0	0 0 / 0
10	0 0 / 0	0 0 / 0	0 0 / 0	0 0 / 0	0 0 / 0	0 0 / 0	0 0 / 0	0 0 / 0	0 0 / 0
11	16 10 / 6	0 0 / 0	0 0 / 0	11 6 / 5	0 0 / 0	2 2 / 0	3 2 / 1	0 0 / 0	0 0 / 0
12	56 38 / 18	0 0 / 0	2 2 / 0	34 21 / 13	0 0 / 0	14 9 / 5	6 6 / 0	0 0 / 0	0 0 / 0
Total	72 48 / 24	0 0 / 0	2 2 / 0	45 27 / 18	0 0 / 0	16 11 / 5	9 8 / 1	0 0 / 0	0 0 / 0

The Federal Ethnicity and Race view displays aggregate student data as required by the Federal Ethnicity and Race Categories from the U.S. Department of Education. See the help for more information.

Enrollment Summary: Federal Ethnicity and Race Report as of 10/01/2020 (A)

Madras High School

View: Federal Ethnicity and Race		Students: <input checked="" type="radio"/> All Active Enrollments <input type="radio"/> Current Selection		Date: 10/01/2020	
-------------------------------------	--	---	--	---------------------	--

Grade Level	Total in Grade	(A) Asian	(B) Black or African American	(I) American Indian or Alaska Native	(P) Native Hawaiian or Other Pac Islander	(W) White	Hispanic/Latino	Two or More Race Categories	Unspecified
9	233 115 / 118	3 0 / 3	3 1 / 2	83 39 / 44	1 0 / 1	55 32 / 23	87 42 / 45	1 1 / 0	0 0 / 0
10	197 103 / 94	1 1 / 0	2 2 / 0	63 40 / 23	1 1 / 0	49 21 / 28	79 38 / 41	2 0 / 2	0 0 / 0
11	171 80 / 91	1 0 / 1	2 1 / 1	57 25 / 32	2 0 / 2	41 20 / 21	66 34 / 32	2 0 / 2	0 0 / 0
12	143 63 / 80	2 0 / 2	3 1 / 2	44 19 / 25	0 0 / 0	43 19 / 24	51 24 / 27	0 0 / 0	0 0 / 0
Total	744 361 / 383	7 1 / 6	10 5 / 5	247 123 / 124	4 1 / 3	188 92 / 96	283 138 / 145	5 1 / 4	0 0 / 0

The Federal Ethnicity and Race view displays aggregate student data as required by the Federal Ethnicity and Race Categories from the U.S. Department of Education. See the help for more information.

6. FACILITIES IMPROVEMENT OPTIONS

Elementary Schools

K-8 Schools

Middle Schools

High Schools

Performing Arts Center

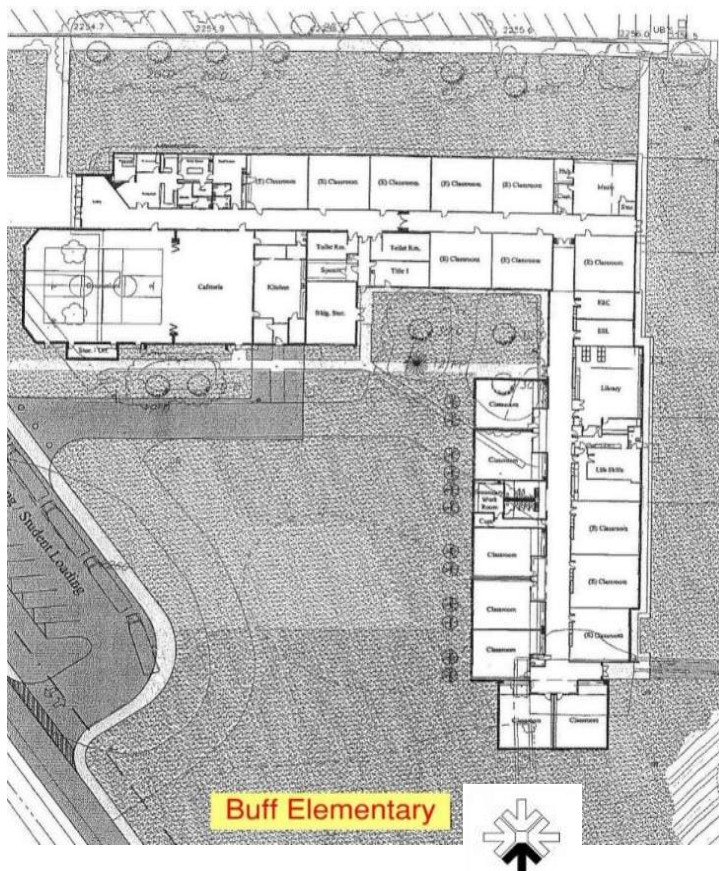
Support Services Buildings

Warm Springs Teacher Housing

FACILITIES IMPROVEMENT OPTIONS | BUFF ELEMENTARY SCHOOL



Location:	375 SE Buff Street
Building Area:	47,010 square feet
Year Built:	1956 – Remodel 2003
2018-2019 Enrollment:	288



Proposed Improvements:

- Replace the roof.
- Replace damaged/stained ceiling tiles.
- Replace all single pane windows.
- Replace all door knobs with ADA lever hardware.
- Replace worn/damaged flooring.
- Repair areas of concrete foundation.
- Replaced aged HVAC systems.
- Upgrade to LED lighting.
- Upgrade intercom, bell and clock system.
- Minor landscape improvements around building.
- Replace original electrical branch panels.
- Upgrade Fire Alarm to voice evacuation.
- Outdoor Lighting Improvements

Cost Estimates

Oregon Assessed Improvements:	\$2,897,277
Recommended Modernization:	\$2,897,277
Building Replacement:	\$24,035,743

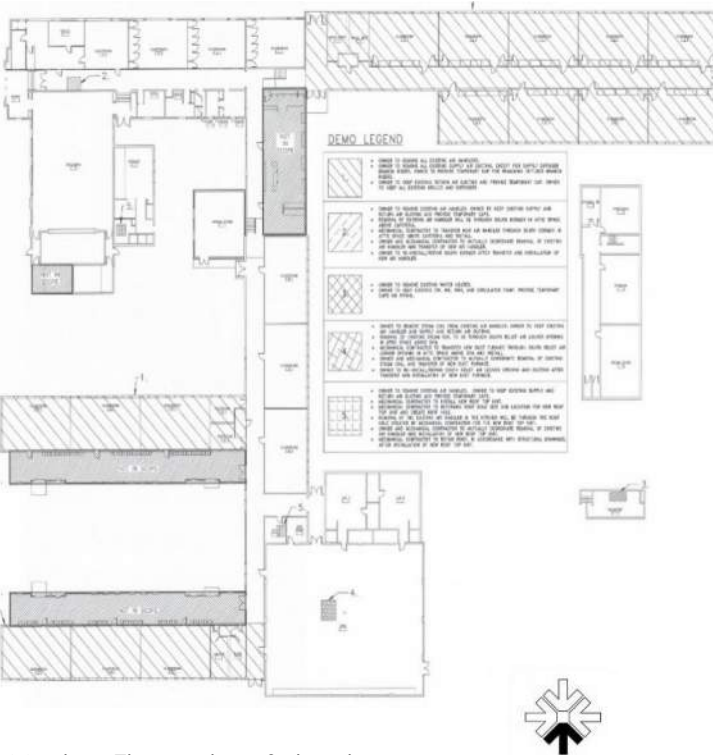
FACILITIES IMPROVEMENT OPTIONS | MADRAS ELEMENTARY SCHOOL



Location:	215 SE 10 th Street
Building Area:	52,428 square feet
Year Built:	1938 – Remodel 1951
2018-2019 Enrollment:	331

Proposed Improvements:

- Replace the GYM and TPO roof.
- Replace damaged/stained ceiling tiles.
- Replace all single pane windows.
- Replace all door knobs with ADA lever hardware.
- Repair concrete foundation.
- Repoint/patch brick where needed.
- Replace worn/damaged flooring.
- Repair cut trusses.
- Replace smaller entry canopies.
- Upgrade remaining standard efficient furnaces.
- Rebalance HVAC System.
- Upgrade to LED lighting.
- Upgrade intercom, bell and clock system.
- Replace original electrical branch panels.
- Upgrade Fire Alarm to voice evacuation.
- Add CCTV cameras.



Madras Elementary School

Cost Estimates

Oregon Assessed Improvements:	\$5,588,889
Recommended Modernization:	\$5,588,889
Building Replacement:	\$26,805,912

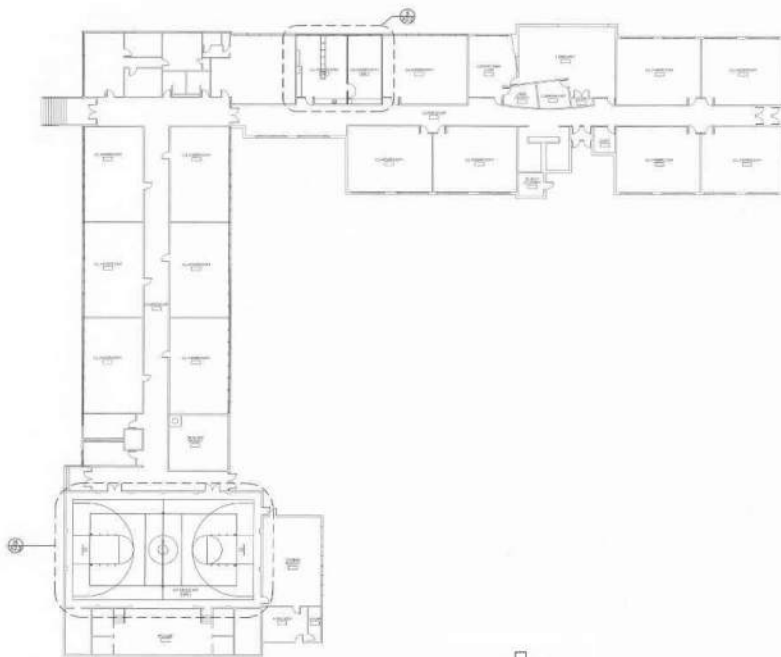
FACILITIES IMPROVEMENT OPTIONS | METOLIUS ELEMENTARY SCHOOL



Location:	420 SW Butte Avenue, Metolius OR 97741
Building Area:	31,080 square feet
Year Built:	1949 - Remodel 2000
2018-2019 Enrollment:	263

Proposed Improvements:

- Replace the roof.
- Replace damaged/stained ceiling tiles.
- Replace all single pane wire safety glazing windows.
- Replace all door knobs with ADA lever hardware.
- Adjust south entry vestibule to be accessible.
- Repair concrete walkways.
- Repair foundation.
- Replace worn/damaged flooring.
- Upgrade remaining standard efficient furnaces.
- Rebalance HVAC System.
- Upgrade to LED lighting.
- Upgrade intercom, bell and clock system.
- Replace original electrical branch panels.
- Upgrade Fire Alarm to voice evacuation.
- Add backflow valve on the main water riser.
- Main entry to be ADA accessible.



Metolius Elementary School



Cost Estimates

Oregon Assessed Improvements:	\$2,920,416
Recommended Modernization:	\$2,920,416
Building Replacement:	\$15,890,893

FACILITIES IMPROVEMENT OPTIONS | BIG MUDDY SCHOOL – K-8



Location:	P.O. Box 220, Antelope, Or 97001
Building Area:	1,750 square feet
Year Built:	1980's
2018-2019 Enrollment:	16



Big Muddy School



Proposed Improvements:

Shore existing rock retaining wall or construct a new retaining wall.

Provide accessible parking.

Provide accessible access to entry.

Replace door knobs throughout.

Upgrade to LED lighting.

Install exterior emergency egress lighting at exterior doors.

Install exterior CCTV cameras.

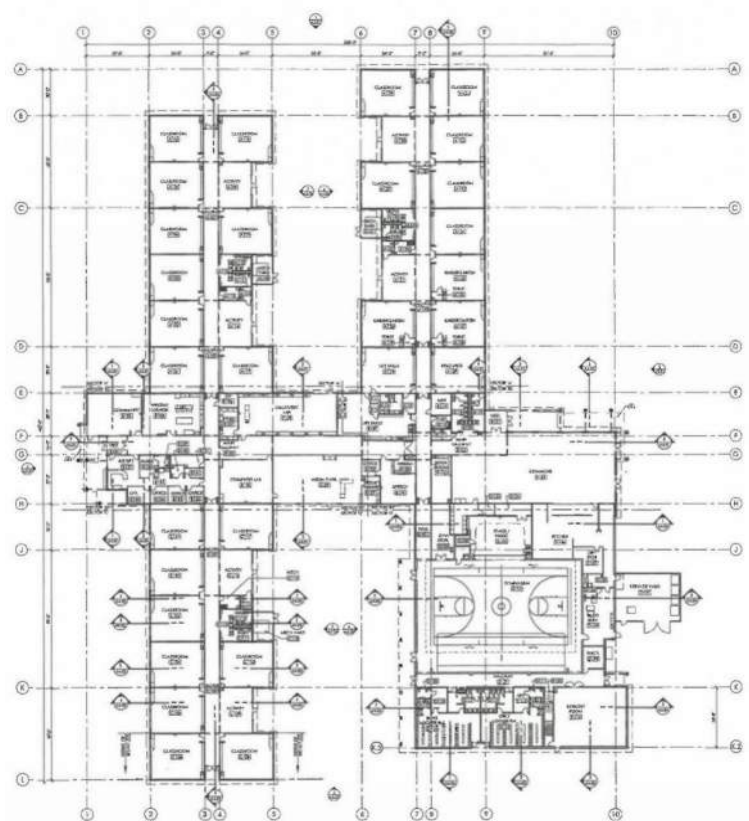
Cost Estimates

Oregon Assessed Improvements:	\$171,306
Recommended Modernization:	\$171,306
Building Replacement:	\$639,113

FACILITIES IMPROVEMENT OPTIONS | WARM SPRINGS K-8



Location:	50 Chukar Road, Warm Springs, OR 97761
Building Area:	86,314 square feet
Year Built:	2014 – Addition 2015
2018-2019 Enrollment:	587



Proposed Improvements:

- Replace the roof.
- Replace damaged/stained ceiling tiles.
- Replace window seals where seals are missing, damaged or missing.
- Replace damaged/spalling concrete.
- Replace worn/damaged flooring.
- Upgrade to LED lighting.
- Patch damaged exterior siding.
- Improved outdoor lighting.
- Addition to parking area.
- Playground and fencing improvements.

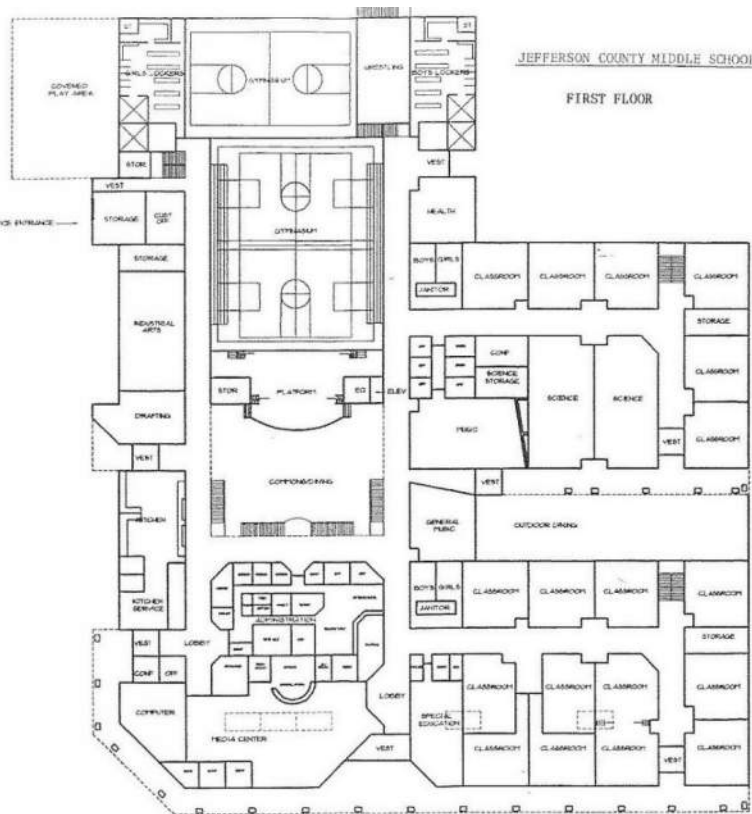
Cost Estimates

Oregon Assessed Improvements:	\$3,100,291
Recommended Modernization:	\$3,100,291
Building Replacement:	\$44,131,485

FACILITIES IMPROVEMENT OPTIONS | JEFFERSON COUNTY MIDDLE SCHOOL



Location:	1180 SE Kemper Way
Building Area:	124,288 square feet
Year Built:	1995
2018-2019 Enrollment:	473



Proposed Improvements:

- Replace the roof.
- Replace damaged/stained ceiling tiles.
- Replace damaged soffit metal panel.
- Add new trash enclosure.
- Repair sagging gutter and repair/replace heat trace.
- Re-asphalt parking lot and replace wheel stops.
- Repair damaged spalling concrete.
- Replace worn/damaged flooring.
- Repair wired safety glazing.
- Install missing fire extinguishers as required.
- Install gas system shut-off button in science rooms.
- Upgrade to LED lighting.
- Upgrade intercom, bell and clock system.
- Upgrade fire alarm to voice evacuation.
- Replace electrical switch gear.

Cost Estimates

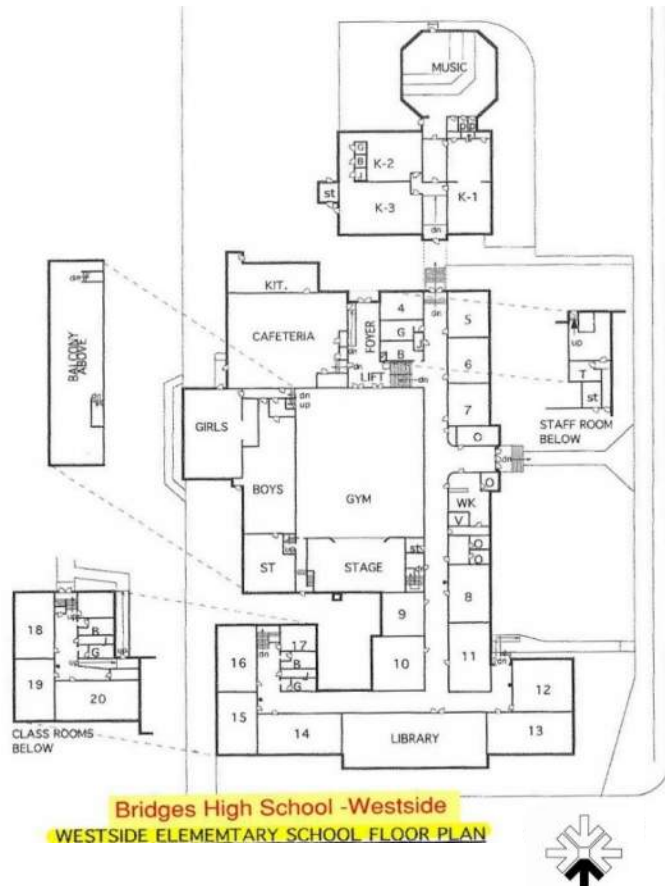


Oregon Assessed Improvements:	\$8,793,937
Recommended Modernization:	\$8,793,937
Building Replacement:	\$66,480,160

FACILITIES IMPROVEMENT OPTIONS | BRIDGES HIGH SCHOOL - MADRAS WESTSIDE



Location:	410 SW 4 th Street
Building Area:	54,540 square feet
Year Built:	1938 – Remodel (1946, 1973, 1974, 1998 and 2007)
2018-2019 Enrollment:	76



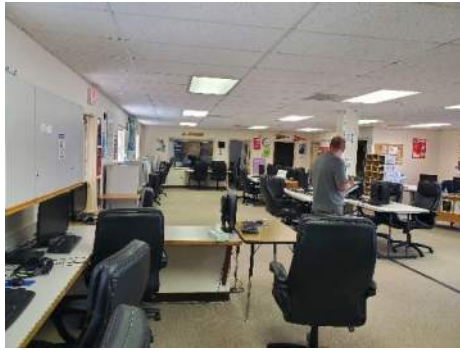
Proposed Improvements:

- Patch and repair asphalt parking lot.
- Replace all door knobs with ADA lever hardware.
- Upgrade restrooms for accessibility, finishes, and equipment.
- Replace the roof.
- Remove and replace dry rot from window sills.
- Replace worn/damaged flooring.
- Replace missing brick mortar.
- Repair areas of concrete foundation.
- Replaced aged HVAC systems.
- Upgrade to LED.
- Upgrade intercom, bell and clock system.

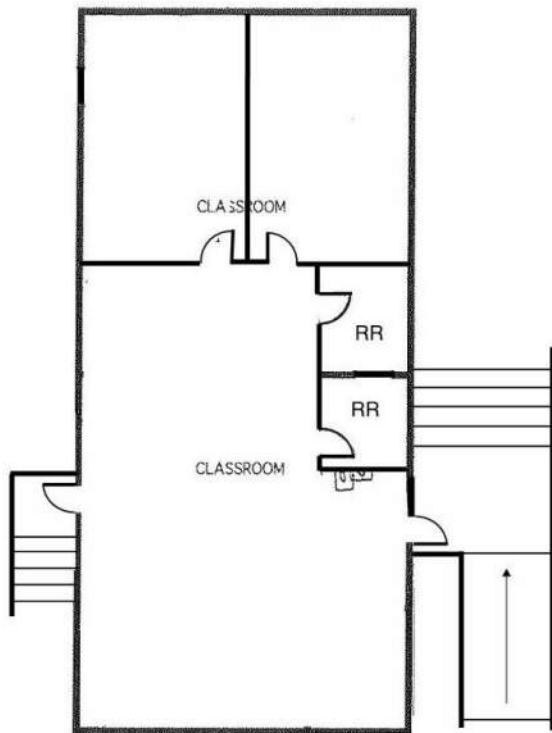
Cost Estimates

Oregon Assessed Improvements:	\$6,996,180
Recommended Modernization:	\$6,996,180
Building Replacement:	\$32,175,873

FACILITIES IMPROVEMENT OPTIONS | BRIDGES HIGH SCHOOL – WARM SPRINGS



Location:	1114 Wasco Street, Warm Springs, OR 97761
Building Area:	1,792 square feet
Year Built:	1994
2018-2019 Enrollment:	16



Proposed Improvements:

- Patch and repair asphalt parking lot
- Provide accessible parking
- Upgrade both exterior and interior light to LED.
- Add exterior emergency egress lighting at exterior doors
- Add exterior CCTV cameras

Cost Estimates

Oregon Assessed Improvements:	\$199,354
Recommended Modernization:	\$199,354
Building Replacement:	\$1,057,190

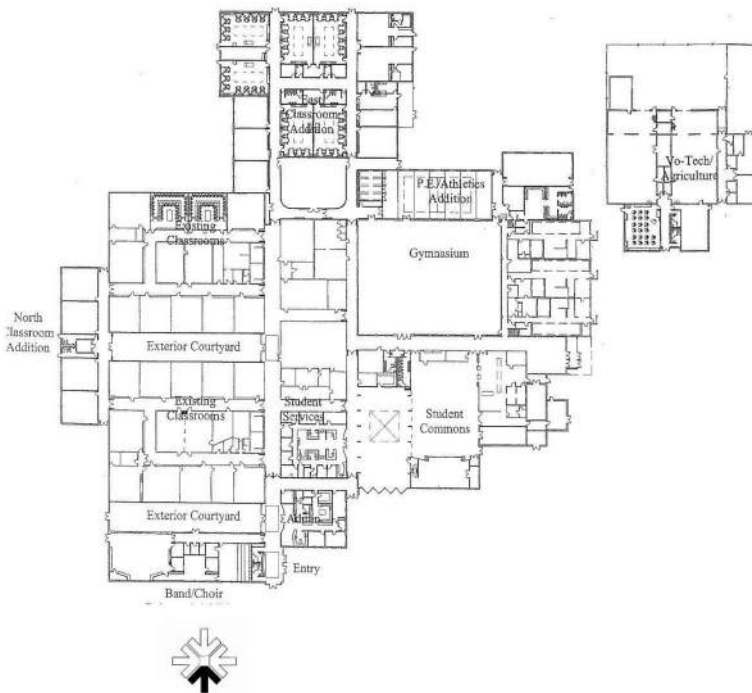
FACILITIES IMPROVEMENT OPTIONS | MADRAS HIGH SCHOOL



Location:	390 10 th Street
Building Area:	138,336 square feet
Year Built:	1964 – Remodel 2003
2018-2019 Enrollment:	735

Proposed Improvements:

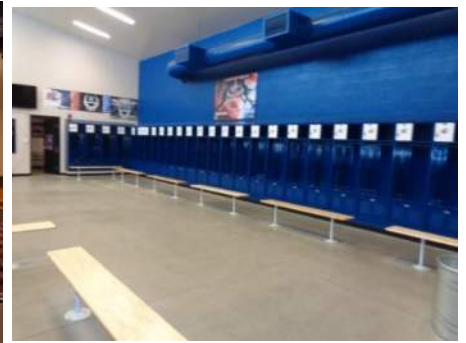
- Replace the roof.
- Install heat trace or ice melt in roof drains and through-wall scuppers.
- Patch and repair brick and missing mortar.
- Replaced damaged ceiling tiles.
- Replace all door knobs with ADA lever hardware.
- Replace wire safety glazing.
- Replace worn/damaged flooring. Some VCT flooring is hazardous and will need to be abated if disturbed.
- Replace stage wood floors.
- Replaced aged HVAC systems, near end of anticipated life expectancy.
- Replace electrical service and branch panelboard.
- Upgrade to LED.
- Upgrade intercom, bell and clock system.
- Upgrade Fire Alarm to voice evacuation.



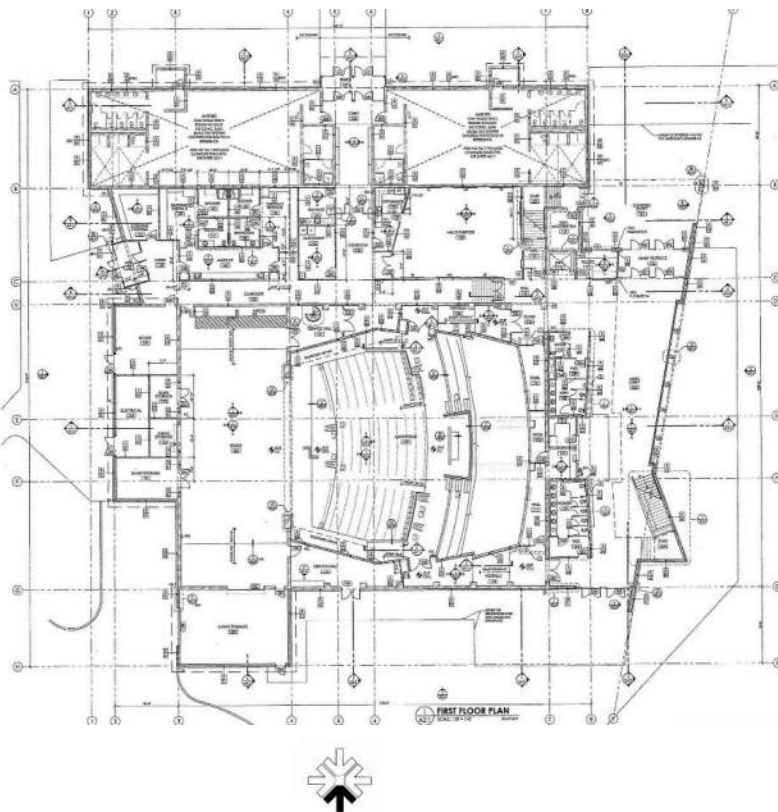
Cost Estimates

Oregon Assessed Improvements:	\$8,295,489
Recommended Modernization:	\$8,295,489
Building Replacement:	\$81,629,022

FACILITIES IMPROVEMENT OPTIONS | PERFORMING ARTS CENTER



Location:	412 SE Buff Street
Building Area:	34,010 square feet
Year Built:	2014
2018-2019 Enrollment:	N/A



Proposed Improvements:

Repair heat trace.

Install heat trace or ice melt in roof drains and through-wall scuppers.

Replaced damaged ceiling tiles.

Replace damaged and failing window seals.

Repair concrete near bleachers.

Upgrade to LED interior and exterior.

Retro-Commission Mechanical System.

Rebalance HVAC system (Air and Water).

Replace Trap Primers.

Trace Hot Water Pipe/find and fix lack of hot water in locker rooms.

Investigate and fix electrical issue with the "C" phase.

Cost Estimates

Oregon Assessed Improvements:	\$552,883
Recommended Modernization:	\$552,883
Building Replacement:	\$17,977,523

FACILITIES IMPROVEMENT OPTIONS | SUPPORT SERVICES BUILDING



Location:	445 SE Buff Street
Building Area:	7,460 square feet
Year Built:	1978 – Remodel 2000
2018-2019 Enrollment:	N/A

Proposed Improvements:

Repair damaged/lifting concrete sidewalk and curbing.

Replace down spout, gutters flashing and paint.

Trim grass and shrubs 6" from stem wall and exterior siding. Possibly add a planter bed to prevent vegetation from growing against the building.

Repair lifting sheet vinyl seam adjacent to lobby restrooms.

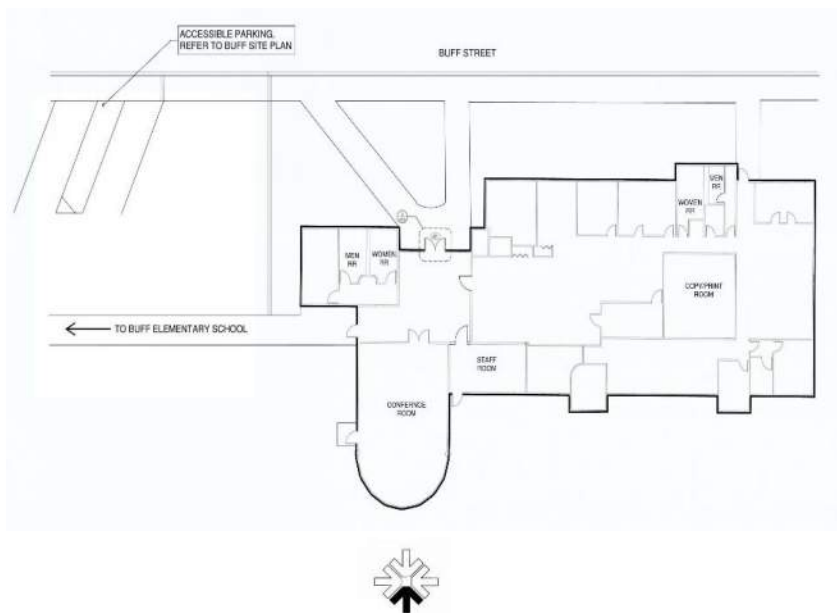
Upgrade electrical service and branch panels.

Upgrade to LED lights.

Install additional interior and exterior CCTV cameras.

Upgrade to CAT6 or CAT6A cabling.

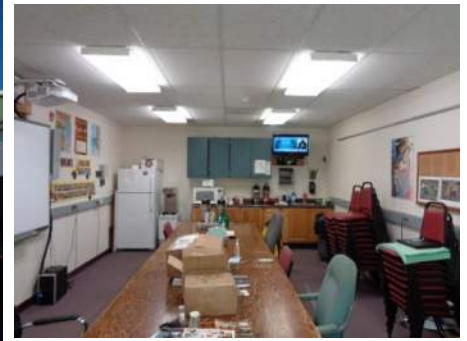
Improve outdoor lighting.



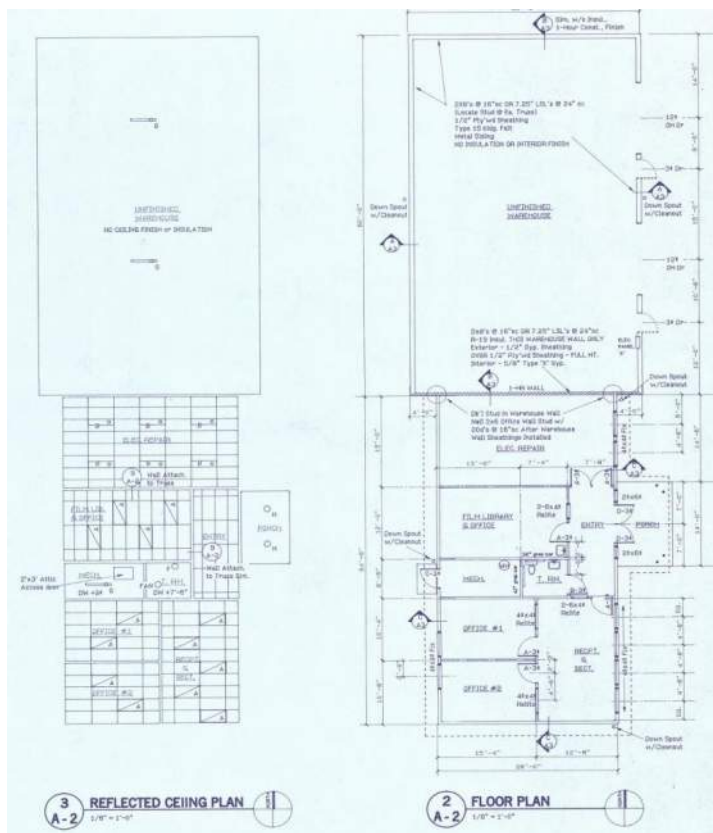
Cost Estimates

Oregon Assessed Improvements:	\$596,011
Recommended Modernization:	\$596,011
Building Replacement:	\$3,755,543

FACILITIES IMPROVEMENT OPTIONS | TRANSPORTATION OPERATION OFFICE



Location:	674 SE Buff Street
Building Area:	3,846 square feet
Year Built:	1998
2018-2019 Enrollment:	N/A



Proposed Improvements:

Replace damaged downspout.

Replace holes/openings along the east roof soffit vents to prevent birds from entering into the attic space.

Paint exterior including exterior doors.

Replace door knobs with ADA lever hardware.

Replace damaged overhead roll-up insulated door panels.

Replace worn carpet.

Upgrade to LED lights.

Install additional interior and exterior CCTV cameras.

Paint interior throughout.

Cost Estimates



Oregon Assessed Improvements:	\$137,987
Recommended Modernization:	\$137,987
Building Replacement:	\$1,845,411

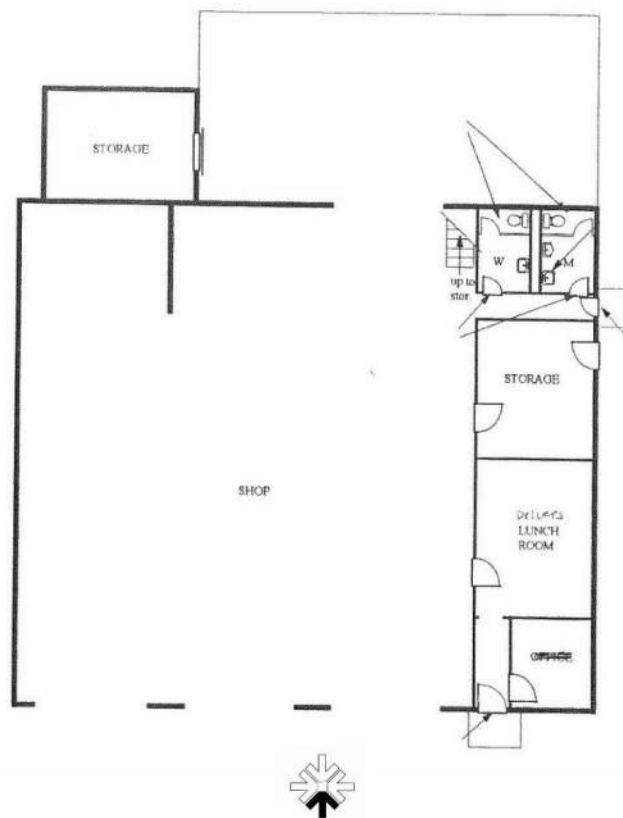
FACILITIES IMPROVEMENT OPTIONS | TRANSPORTATION SHOP



Location:	674 SE Buff Street
Building Area:	3,846 square feet
Year Built:	1998
2018-2019 Enrollment:	N/A

Proposed Improvements:

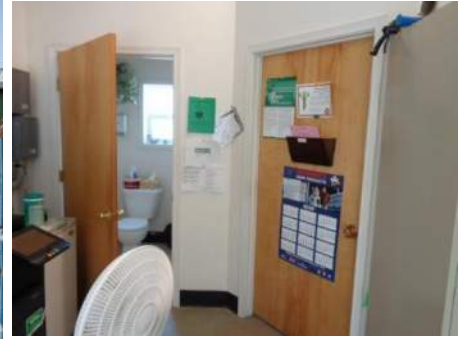
- Replace spalling concrete at front of building.
- Replace roof, provide roof insulation, flashing, gutter system and provide additional venting for vehicular exhaust.
- Patch damaged CMU.
- Replaced damaged doors.
- Replace windows.
- Paint exterior including exterior doors/door frames.
- Replace door knobs with ADA lever hardware.
- Remodel restrooms to be accessible (ADA).
- Insulate recirculating pipes to be more efficient.
- Replace electrical distribution and branch panels.
- Upgrade to LED lights.
- Paint interior throughout.



Cost Estimates

Oregon Assessed Improvements:	\$729,580
Recommended Modernization:	\$729,580
Building Replacement:	\$1,728,333

FACILITIES IMPROVEMENT OPTIONS | FOOD SERVICE WAREHOUSE



Location:	674 SE Buff Street
Building Area:	1,200 square feet
Year Built:	1994 – Remodel 1998
2018-2019 Enrollment:	N/A

Proposed Improvements:

Patch and repair concrete floor.

Install roof gutter and downspout system.

Replace exterior metal wall panels and fix freezer, cooler base flashing.

Replaced damaged doors and freezer cooler overhead air curtain/shroud.

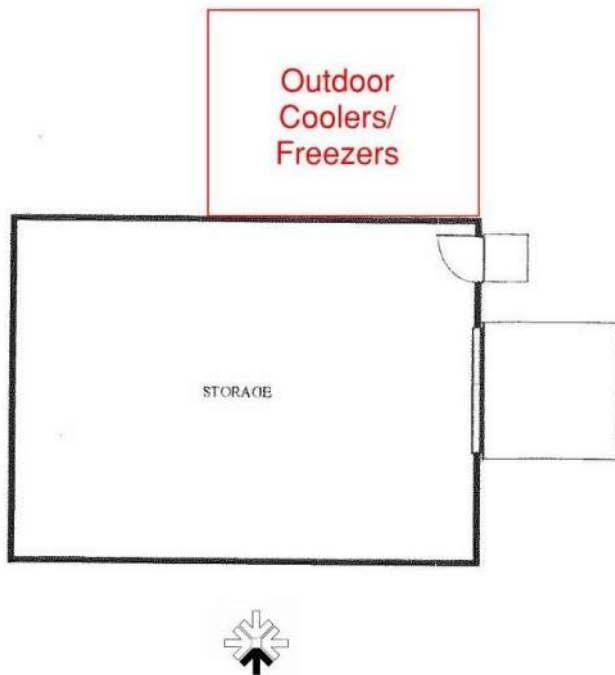
Replace door knobs with ADA lever hardware.

Remodel restrooms to be accessible (ADA).

Replace electrical distribution and branch panels.

Upgrade to LED lights.

Paint interior throughout.



Cost Estimates

Oregon Assessed Improvements:	\$143,721
Recommended Modernization:	\$143,721
Building Replacement:	\$896,724

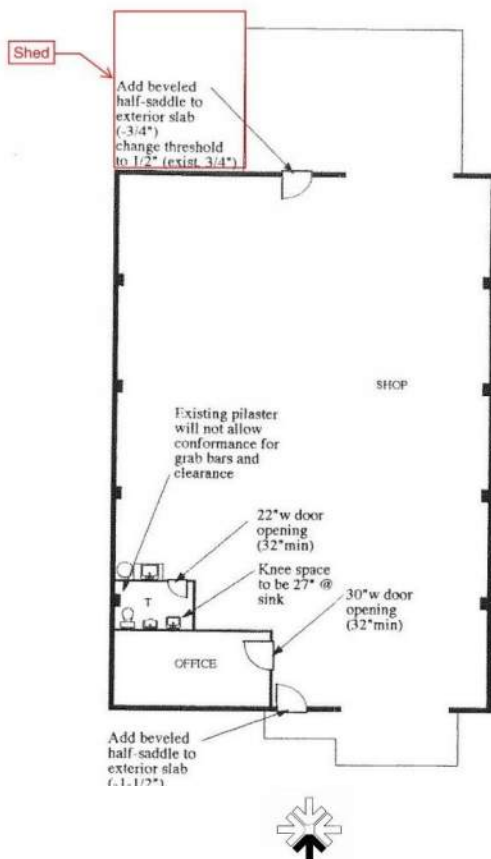
FACILITIES IMPROVEMENT OPTIONS | MAINTENANCE SHOP & WAREHOUSE



Location:	674 SE Buff Street
Building Area:	2,726 square feet
Year Built:	1964
2018-2019 Enrollment:	N/A

Proposed Improvements:

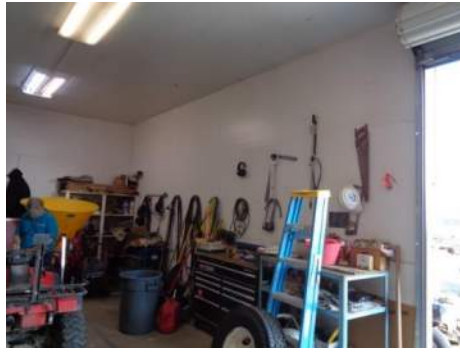
- Repair/replace asphalt parking lot.
- Repair concrete.
- Replace roof, provide roof insulation, flashing, gutter system.
- Patch damaged CMU.
- Replaced damaged doors.
- Replace windows.
- Paint interior throughout.
- Paint exterior including exterior doors/door frames.
- Replace door knobs with ADA lever hardware.
- Remodel restrooms to be accessible (ADA).
- Replace electrical distribution equipment.
- Upgrade to LED lights.



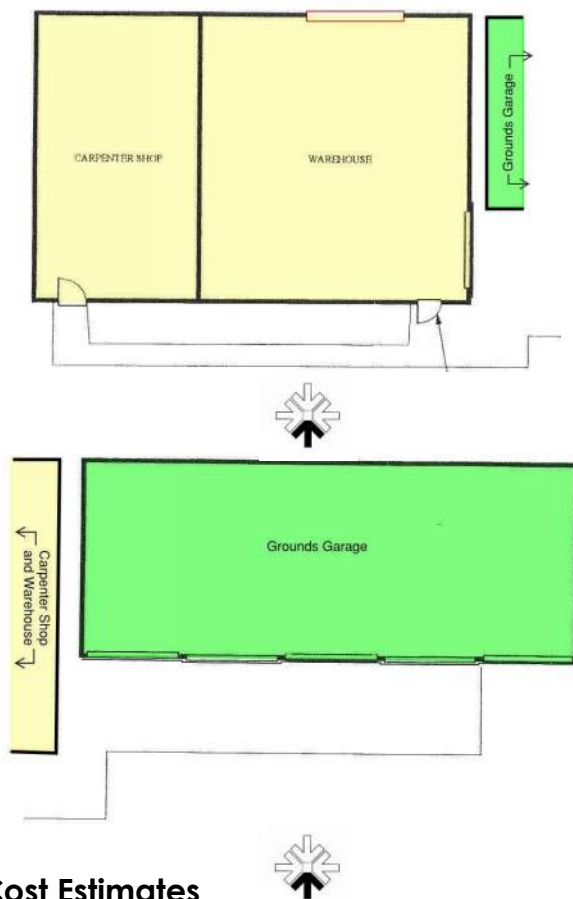
Cost Estimates

Oregon Assessed Improvements:	\$674,216
Recommended Modernization:	\$674,216
Building Replacement:	\$1,736,860

FACILITIES IMPROVEMENT OPTIONS | GROUNDS SHOP & WAREHOUSE



Location:	674 SE Buff Street
Building Area:	3,638 square feet
Year Built:	1960's
2018-2019 Enrollment:	N/A



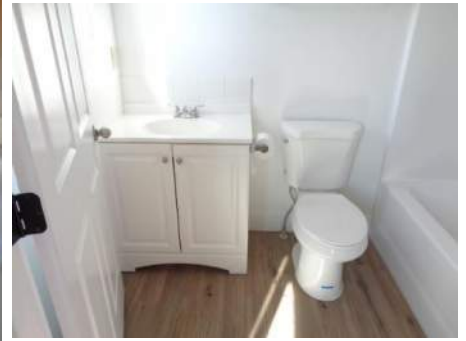
Proposed Improvements:

- Patch/Replace asphalt parking lot.
- Repair concrete cracks.
- Replace roof, provide roof insulation, flashing, and gutter system.
- Replace metal wall panels system.
- Replaced damaged doors.
- Replace windows.
- Paint exterior including exterior doors/door frames.
- Replace door knobs with ADA lever hardware.
- Remodel restrooms to be accessible (ADA).
- Provide proper ventilation when charging the batteries.
- Replace electrical distribution and branch panels.
- Upgrade to LED lights.
- Paint interior throughout.

Cost Estimates

Oregon Assessed Improvements:	\$1,012,307
Recommended Modernization:	\$1,012,307
Building Replacement:	\$2,317,937

FACILITIES IMPROVEMENT OPTIONS | WARM SPRINGS TEACHER HOUSING



Location:	401-409 SE Wasco Street
Building Area:	+/- 9,500 square feet
Year Built:	1950's – Addition 2020
2018-2019 Enrollment:	N/A

Proposed Improvements:

Replace/repair sewer line.

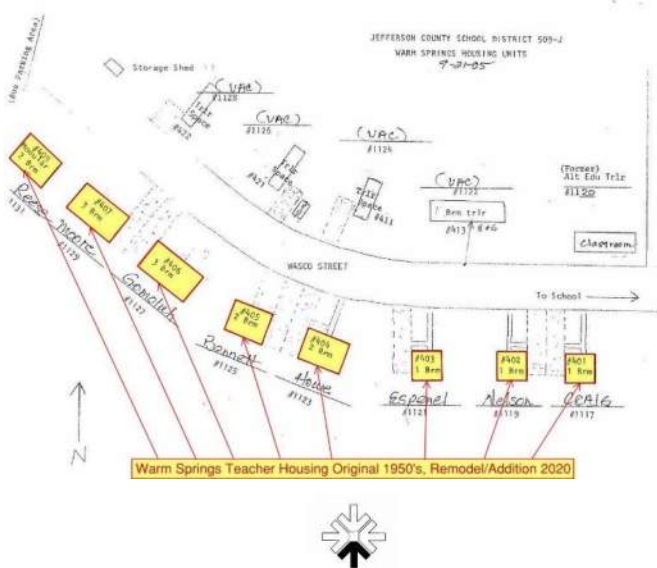
Replace/repair concrete sidewalks and driveways.

Replace HVAC units if not addressed during the 2020 remodel.

Replace/repair gypsum board if not addressed during the 2020 remodel.

Replace sheet vinyl if not addressed during the 2020 remodel.

Replace sheet ceramic tile if not addressed during the 2020 remodel.



Cost Estimates

Oregon Assessed Improvements:	\$302,867
Recommended Modernization:	\$302,867
Building Replacement:	\$4,820,788

7. IMPROVEMENTS AND PLANNING

Capital Improvements

Land Schedule

Future Bond

CAPITAL IMPROVEMENTS

A Facilities Assessment report was completed on all of the District's student-occupied buildings in June of 2020. Planning for the future, multiple projects are being considered in the next ten years, both large and small projects. Based on the results of this assessment, examination of educational standards, building capacity and projected enrollment, the district has developed a list of possible improvements, additions and upgrades to Jefferson County 509J facilities:

Possible Future Improvements:

1. Repair and re-roof existing school buildings
 - District to provide input on selected buildings
2. Add DDC controls to existing school buildings
 - District to provide input on selected buildings
3. Consider technology upgrades
 - On-line learning equipment
 - Wi-Fi and wireless infrastructure (maybe partner with utility provider)
4. Improvements to Westside school building
 - Improvements and remodel
 - Mechanical and Electrical Systems upgrade
 - Accessibility upgrades
5. Classroom addition to Warm Springs K-8 Academy
 - Add classroom for growing student enrollment
6. Ongoing Facility Maintenance
 - Identify specific maintenance concerns and complete the repairs
 - District to provide input on selected buildings/projects
7. Site Lighting and Signage
 - Additional way-finding signage and exterior lighting
 - District to provide input on selected buildings

IMPROVEMENTS AND PLANNING

Land Schedule

The following table shows a list of lots owned by Jefferson County School District 509J

	Site	Address	Account	Map #	Land	Land Value Per Assessor	Land Value Per Books
1	Madras High School	390 SE 10th Street, Madras OR 97741	10191	111312-BD-00100	7.67 Acres	256,680	305,691
2	Buff Elementary	375 SE Buff Street, Madras OR 97741	10193	111312-CA-00100	10.11 Acres	243,610	290,126
3	Madras Elementary	215 SE 10th Street, Madras OR 97741	9915	111312-BA-04220	8.14 Acres	256,260	305,191
4	Metolius Elementary	420 Butte Ave, Metolius OR 97741	3010	111328-AD-00800	4.24 Acres	365,660	435,480
5	Westside Building	410 SE 4th Street, Madras OR 97741	9573	111311-AD-02400	6.26 Acres	163,360	194,552
	Westside Building	410 SE 4th Street, Madras OR 97741	9573	111311-AD-02400	.47 Acres	27,490	32,739
6	SSB	445 SE Buff Street, Madras OR 97741	9922	111312-BA-04900	.10 Acres	12,470	14,851
7	Maintenance	1301 Buff Street, Madras OR 97741	9860	111312-AC-00800	18.61 Acres	286,750	341,503
8	Loucks Road	Parcel #1 - Farm Land	2527	111406-00-01000	31.75 Acres	38,059	45,326
9	Loucks Road	Parcel #2 - UGB Land	20139	111406-00-01000	30.81 Acres	36,932	43,984
10	Loucks Road	Parcel #3 - Sold to Jefferson County	20140	111406-00-01000	6.69 Acres	8,019	9,550
11	Yarrow	Partition Parcel No. 2010-09 Lot 1 Parcel 1	18636	11407-00-00103	20 Acres	499,820	595,258
Total						2,195,110	2,614,251

Future Growth District 509 J

Loucks Road Parcels 1-3

Yarrow Road Parcel 1



IMPROVEMENTS AND PLANNING

Future Bond

Jefferson County School District 509J is planning on a future bond brought to the voters in 2021 or 2022. The school district is in a unique situation where past debt will be retiring and an additional \$10 million bond could be added, without raising property taxes. Knowing there is need for capital improvements within the school district existing facilities, the board of directors is optimistic that there is local support for a future bond. As the board members and staff continue to plan for future improvements, leaders are aware of COVID-19 hardships and restrictions. In the coming months, leaders of the school district will continue to plan for future improvements while seeking further input from staff, parents and community members. Ultimately, future district decisions regarding capital projects and bonds need community support in order to be successful. Given the current pandemic and changing conditions brought by 2020, JCSD 509J is looking forward to 2021 and solidifying future bond planning schedule and defining select facility improvements.

(541) 475-6192

f t i

CONTACT US

Schools ▾ District ▾ Students


Jefferson County School District 509J

UNITE. ENGAGE. SOAR.

Families Community ▾ Staff ▾

Input Needed! Surveys open now [Click Here](#)

LONG RANGE FACILITY PLAN



Eddie Adams
District Facilities Supervisor
674 SE Buff Street
Madras, OR 97741
(541) 475-3536

Facilities Planning

Jefferson County School District 509-J owns and maintains 8 open school buildings serving more than 2,700 students. The district's long-range facilities plan identifies major school building improvement projects for the next 10 years.

Facility Improvements for Schools

[Download/Print PDF Document](#)

Jefferson County School District 509J

CONTACT US: 445 SE Buff Street
Madras, OR 97741

HOURS:
Monday - Friday
8:00 am - 5:00 pm

SAFE OREGON

TRANSLATE
[Select Language](#)

8. APPENDIX

Appendix A – Long Range Plan Questions

Appendix B – Educational Vision Questions

Jefferson County School District 509J – December 2020

[Long Range Plan Questions](#)

The purpose of this survey is to gather information about your experience and understanding of the Jefferson County School District and to collect thoughts and ideas that can be considered for district-wide future long range plans.

1. Are you a:
 - a. Parent
 - b. Community Member
 - c. Staff Member
 - d. Other
2. The district is in need of roof replacement projects at a handful of the school buildings. Will you support a local bond election that includes significant roof repairs?
 - a. Yes
 - b. No
 - c. Maybe
3. The West Side School is currently home to Bridges High School and is partially occupied. The building is in need of major improvements. Will you support a local bond election that proposes major improvements at this facility?
 - a. Yes
 - b. No
 - c. Maybe
4. Virtual and distance learning technology is playing a key role in student education during the pandemic. Will you support a local bond election that proposes additional equipment and infrastructure to increase the school district's ability to connect remotely with students on-line?
 - a. Yes
 - b. No
 - c. Maybe
5. Student enrollment continues to grow at the Warm Springs K-8 School facility. Will you support a local bond election that proposes a four-classroom addition at this facility?
 - a. Yes
 - b. No
 - c. Maybe
6. As energy costs continue to rise, the school district is interested in pursuing mechanical and electrical improvements at some of the older school buildings. Will you support a local bond election that includes strategic HVAC, lighting and plumbing upgrades at various school buildings?
 - a. Yes
 - b. No
 - c. Maybe

7. Many of the school district support buildings located at 674 SE Buff Street are 50 years or older and have not been updated to meet current code requirements for life safety, accessibility or energy-use requirements. In addition, this existing service yard and buildings sit in the Willow Creek 100-year floodplain. Will you support a local bond election that includes construction of new support services buildings at a new site within the City of Madras?
- Yes
 - No
 - Maybe
8. In 2018, JCSD successfully applied for and was granted the Oregon Seismic Rehabilitation Grant specific to improvements to the Gym, Kitchen and Entrance at Metolius Elementary School. Construction for the project will be completed in December 2020.
- 8a. Were you aware that this project is on-going and being funded by a state grant?
- Yes
 - No
 - Maybe
- 8b. Should the district continue to pursue additional state grants for facility improvements?
- Yes
 - No
 - Maybe
9. Given the timing of current bonds and levies retiring, Jefferson County School District is able run a local bond in the amount of \$10 million without increasing taxes. Will you support a bond election in 2021 or 2022 that accomplishes this?
- Yes
 - No
 - Maybe
10. Future school district bonds will require community support. Are you willing to help serve on a Citizen's Committee to help educate the community about the upcoming school district needs and assist with the local bond campaign?
- Yes
 - No
 - Maybe
11. Other comments or considerations for JCSD 509J long range planning:
- Your Answer

Jefferson County School District 509J – December 2020

[Educational Vision Questions](#)

The purpose of this survey is to gather information about your experience and understanding of the Jefferson County School District and to collect thoughts and ideas that can be considered for district-wide educational vision.

1. Are you a:
 - a. Parent
 - b. Community Member
 - c. Staff Member
 - d. Other

2. JCSD mission is: Uniting to Empower Culturally-Enhanced Learners to Shape the World. Is the school district taking the appropriate steps to meet this mission statement?
 - a. Yes
 - b. No
 - c. Your Answer

3. Do you agree with Jefferson County School District's mission statement?
 - a. Yes
 - b. No
 - c. Your Answer

4. Are there other educational priorities or goals that are being overlooked within the school district?
 - a. Yes
 - b. No
 - c. Your Answer

5. Virtual and distance learning technology is playing a key role in student education during the pandemic. Is the district adequately supporting your student's needs during the pandemic?
 - a. Yes
 - b. No
 - c. Your Answer

6. What sets our school district apart from neighboring school districts? How can we better leverage our unique strengths?
 - a. Your Answer

7. What have you observed specifically at your child's school that is positive and worth sharing with our community?
 - a. Your Answer

8. What is an area of improvement that we can be working on as a school district?
 - a. Your Answer

9. Future school district vision updates and bond campaigns will require community support. Are you willing to help serve on a Citizen's Committee to help educate the community about the upcoming school district needs and goals?
 - a. Yes
 - b. No
 - c. Maybe

10. Other comments or considerations for JCSD 509J educational vision:
 - a. Your Answer