

# MADRAS ELEMENTARY SCHOOL AND BUFF ELEMENTARY SCHOOL IMPROVEMENTS

PROJECT NO.: 22140B

## ADDENDUM NO. 1

DATE: September 20, 2023

## BID SET

DATED: September 11, 2023



### OWNER

Jefferson County School District 509J  
445 SE Buff Street  
Madras, OR 97741  
541.475.6192

### ARCHITECT

SAJ Architecture  
721 SW Industrial Way, #130  
Bend, Oregon 97702  
541.330.6506

## PROJECT INFORMATION

Project Name: Madras Elementary School and Buff Elementary School Improvements

Owner: Jefferson County School District 509J

Architect: SAJ Architecture

Architect Project Number: 22140B

## NOTICE TO BIDDERS

This Addendum is issued to all registered plan holders pursuant to the Instructions to Bidders and Conditions of the Contract. This Addendum serves to clarify, revise, and supersede information in the Project Manual, Drawings, and previously issued Addenda. Portions of the Addendum affecting the Contract Documents will be incorporated into the Contract by enumeration of the Addendum in the Owner/Contractor Agreement.

The Bidder shall acknowledge receipt of this Addendum in the appropriate space on the Bid Form.

## PART 1: CONTRACTOR QUESTIONS AND CLARIFICATIONS

- Question: In specification Section 00 11 13 Advertisement for Bids, the scope of work shown for the two elementary schools does not align with the scope of work indicated in the project drawings. Which is correct?

Clarification: The scope of work indicated in the drawings is correct. The scope of work indicated in Section 00 11 13 Advertisement for Bids has been corrected to match the project drawings and is attached to this addendum.
- Question: In specification Section 10 28 00, 2.01, A, all restroom accessories are indicated to be CFCI; contractor-furnished, contractor-installed, yet many of the products are individually indicated to be OFCI. Please clarify which products are to be contractor furnished.

Clarification: All restroom accessory products are to be contractor-furnished and contractor-installed unless otherwise noted. The phrase **"unless otherwise noted"** has been added to the specification section for clarification.

## **PART 2: REVISIONS TO THE PROJECT MANUAL**

1. 00 11 13 Advertisement for Bids
  - a. Description of Project Scope Revised as Follows:  
**Madras Elementary School:**
    1. New Single-Ply Roof/Parapet Cap
    2. Interior/Exterior Accessibility Upgrades
    3. Restroom Upgrades
    4. HVAC Equipment Upgrades
    5. New Fire Alarm System**Buff Elementary School:**
    1. New Single-Ply Roof/Parapet Cap
    2. HVAC Equipment Upgrades
2. 10 28 00 Toilet, Bath and Laundry Accessories
  - a. 2.01, A Revised as follows:
    - A. All restroom accessories to be CFCI; contractor-furnished, contractor-installed, **unless otherwise noted.**
  - b. 2.02, J has been added, indicating the product information for wall- or partition-mounted sanitary napkin disposal units.

## **PART 3: REVISIONS TO THE WORKING DRAWINGS**

1. A2.14 Accessible Single-use Restroom-North
  - a. 1/A2.14: Added restroom accessory notes
  - b. 3/A2.14: Added mirror dimensions
2. A2.15 SPED Restroom
  - a. 10/A2.15: Added restroom accessory notes
  - b. 12/A2.15: Added mirror dimensions
3. A2.16 North Boys and Girls Restrooms
  - a. 10/A2.16: Added restroom accessory notes
  - b. 15/A2.16: Added mirror dimensions
4. A2.17 Accessible Single-use Restroom-South
  - a. 6/A2.17: Added restroom accessory notes
  - b. 10/A2.17: Added mirror dimensions

## **PART 4: SUBSTITUTION APPROVALS**

There are no substitution requests as part of Addendum #1.

**THE BIDDER SHALL NOTIFY ALL SUB-BIDDERS OF THIS ADDENDUM AND SHALL ACKNOWLEDGE RECEIPT OF THIS ADDENDUM BY INSERTING THE ABOVE ADDENDUM NUMBER IN THE SPACE PROVIDED ON THE BID FORM PRIOR TO SUBMITTING BIDS. FAILURE TO DO SO MAY SUBJECT THE BIDDER TO DISQUALIFICATION.**

**ATTACHMENTS:**

1. Specification Section 00 11 13 Advertisement for Bidders
2. Specification Section 10 28 00 Toilet, Bath, and Laundry Accessories
3. Madras ES, Sheet A2.14 Accessible Single-use Restroom-North
4. Madras ES, Sheet A2.15 SPED Restroom
5. Madras ES, Sheet A2.16 North Boys and Girls Restroom
6. Madras ES, Sheet A2.17 Accessible Single-use Restroom-South

**END OF ADDENDUM NO. 1**

**SECTION 00 11 13  
ADVERTISEMENT FOR BIDS**

**JEFFERSON COUNTY SCHOOL DISTRICT 509J  
Madras Elementary School, 215 SE 10<sup>th</sup> Street, Madras, OR 97741  
Buff Elementary School, 335 SE Buff Street, Madras, OR 97741  
Madras Elementary School & Buff Elementary School Upgrades  
Bids Due October 4, 2023 @ 1:00 PM Local Prevailing Time  
Invitation to Bid**

Sealed bids will be received by Simon White, Director of Operations, Jefferson County School District 509J, at the Administration Building, 445 SW Buff Street, Front Desk, Madras, Oregon, 97741, by the time and date listed above. The bids will then be publicly opened and read aloud. 1<sup>st</sup> Tier Subcontractor Disclosure Statements are due by 3:00 PM on the above date in order for bids to be considered for award. Bids and 1<sup>st</sup> Tier Subcontractor Disclosure Statement received after the required time and date time will not be considered.

**Madras Elementary School:**

1. New Single-Ply Roof/Parapet Cap
2. Interior/Exterior Accessibility Upgrades
3. Restroom Upgrades
4. HVAC Equipment Upgrades
5. New Fire Alarm System

**Buff Elementary School:**

1. New Single-Ply Roof/Parapet Cap
2. HVAC Equipment Upgrades

A **MANDATORY** pre-bid meeting will be held on September 27, 2023 @ 1:00 PM prevailing local time in the Board Room at the Administration Building located at 445 SE Buff Street, Madras, OR.

Bidding documents are those prepared by SaJ Architects, 721 SW Industrial Way, Suite 130, Bend, OR 97702, (253) 279-6769. Bidding documents may be obtained from the following: Central Oregon Builders Assoc. (COBA), 1051 NE 4<sup>th</sup> St., Bend OR 97703, 541-389-1058 or online at: [www.coba.org](http://www.coba.org). Bidding documents will be available for examination during the bidding period at Jefferson County School District's Administration Office and at SaJ Architects.

This project is a PREVAILING WAGE project therefore no bid will be received or considered unless the Bid contains a statement by the bidder, as part of the bid, that "Contractor agrees to be bound by and will comply with the applicable provisions of 279C.838, 279C.840 or 40 U.S.C. 3141 to 3148."

Publish Date: September 11, 2023  
September 13, 2023

SECTION 10 28 00  
TOILET, BATH AND LAUNDRY ACCESSORIES

PART 1 - GENERAL

1.01 SUMMARY

- A. Section includes:
  - 1. Public-use restroom accessories.
  - 2. Underlavatory guards.
- B. Related Sections:
  - 1. Division 09 Section "Non Structural Framing" for backing, blocking and attachment of accessories to framing.

1.02 DEFINITIONS

- A. Owner-Furnished Contractor Installed Material: OFCI.
- B. Owner-Furnished Owner Installed Material: OFOI.

1.03 SUBMITTALS

- A. Product Data: For each type of product indicated.
- B. Product Schedule: Indicating types, quantities, sizes, and installation locations by room of each accessory required.
  - 1. Identify locations using room designations indicated.
  - 2. Identify products using designations indicated.
- C. Maintenance data.
- D. Warranty: Sample of special warranty.

1.04 QUALITY ASSURANCE

- A. Electrical Components, Devices, and Accessories: Listed and labeled as defined in NFPA 70, by a qualified testing agency, and marked for intended location and application.

1.05 WARRANTY

- A. Special Mirror Warranty: Manufacturer's standard form in which manufacturer agrees to replace mirrors that develop visible silver spoilage defects and that fail in materials or workmanship within specified warranty period.
  - 1. Warranty Period: 15 years from date of Substantial Completion.
- B. Warranty Toilet Accessories: 2 years from the Date for Substantial Completion.

## PART 2 - PRODUCTS

### 2.01 GENERAL

- A. All restroom accessories to be CFCI; contractor-furnished, contractor installed, unless otherwise noted. OFCI = owner-furnished-contractor-installed
- B. Manufacturers' other than Basis-of-Design are required to provide a comparable product as specified in Division 01 Section "Product Requirements."
  - 1. Definition: Comparable Product that is demonstrated and approved through submittal process, or where indicated as a product substitution, to have the indicated qualities related to type, function, dimension, in-service performance, physical properties, appearance, and other characteristics that equal or exceed those of specified product.

### 2.02 PUBLIC-USE RESTROOM ACCESSORIES

- A. Basis-of-Design Products: Bobrick Washroom Equipment, Inc., or comparable product by one of the following:
  - 1. American Specialties, Inc.
  - 2. Bradley Corporation.
  - 3. GAMCO Specialty Accessories; a division of Bobrick Washroom Equipment, Inc.
- B. Toilet Tissue (Roll) Dispenser: OFCI
  - 1. Basis-of-Design Product: Georgia Pacific Compact Coreless #56984
- C. Paper Towel Roll Dispenser: OFCI
  - 1. Basis of Design Product: Scott Essential Roll Paper Towel Dispenser.
- D. Waste Receptacle: OFOI.
- E. Liquid-Soap Dispenser: OFCI
  - 1. Basis-of-Design Product: FMX Foam Soap Dispenser- 5150-06GOJO FMX-12 Dispenser - Dove Gray.
- F. Grab Bar:
  - 1. Basis-of-Design Product: ADA/ANSI compliant Bobrick Concealed Mounting with flange cover.
  - 2. Mounting: Flanges with concealed fasteners.
  - 3. Material: Stainless steel, 0.05 inch thick.
    - a. Finish: Smooth, No. 4 finish (satin) on ends and slip-resistant texture in grip area.
  - 4. Outside Diameter: 1-1/2 inches.
  - 5. Configuration and Length: As indicated on Drawings.
- G. Seat-Cover Dispenser: OFCI
  - 1. Basis of Design Product: Georgia Pacific Safe-T-Gard - #57748.
- H. Mirror Unit:
  - 1. Basis-of-Design Product: Bobrick - Tempered Glass units; B-1658 series.
  - 2. Frame: Stainless-steel channel B-1658.
    - a. Corners: Mitered and mechanically interlocked.

3. Hangers: Produce rigid, tamper- and theft-resistant installation, using method indicated below.
    - a. One-piece, galvanized-steel, wall-hanger device with spring-action locking mechanism to hold mirror unit in position with no exposed screws or bolts.
    - b. Wall bracket of galvanized steel, equipped with concealed locking devices requiring a special tool to remove.
  4. Size: As indicated on Drawings.
- I. Sanitary-Napkin Disposal Unit (Recessed):
1. Basis-of-Design Product: Bobrick.
  2. Mounting: Recessed-B-4353.
  3. Door or Cover: Self-closing, disposal-opening cover.
  4. Receptacle: Removable.
  5. Material and Finish: Stainless steel, No. 4 finish (satin).
- J. Sanitary-Napkin Disposal Unit (Wall or partition-mounted):
1. Basis-of-Design Product: Bobrick.
  2. Mounting: B-270.
  3. Material and Finish: Stainless steel, No. 4 finish (satin).

## 2.03 UNDERLAVATORY GUARDS

- A. Manufacturers: Subject to compliance with requirements, available manufacturers offering products that may be incorporated into the Work include, but are not limited to, the following:
1. Plumberex Specialty Products, Inc.
  2. Truebro by IPS Corporation.
- B. Underlavatory Guard:
1. Description: Insulating pipe covering for supply and drain piping assemblies that prevent direct contact with and burns from piping; allow service access without removing coverings.
  2. Material and Finish: Antimicrobial, molded plastic, white.

## 2.04 CUSTODIAL ACCESSORIES

- A. Basis-of-Design Product: All listed Products are Basis of Design as Bobrick Products, unless indicated otherwise. Subject to compliance with requirements, provide product indicated on Drawings or comparable product by one of the following:
1. American Specialties, Inc.
  2. Bobrick Washroom Equipment, Inc.
  3. Bradley Corporation.
  4. GAMCO Specialty Accessories; a division of Bobrick Washroom Equipment, Inc.

## 2.05 FABRICATION

- A. Keys: Provide universal keys for internal access to accessories for servicing and resupplying. Provide minimum of six keys to Owner's representative.

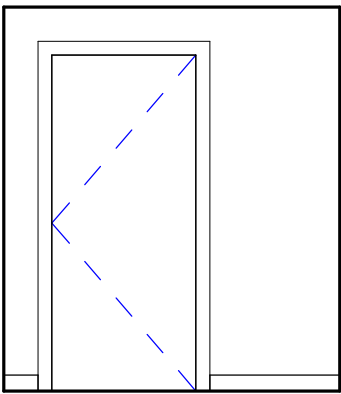
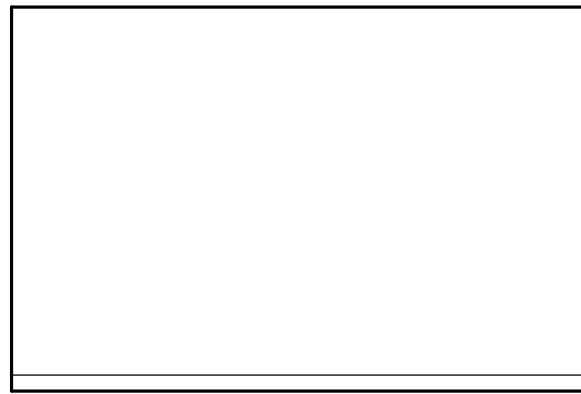
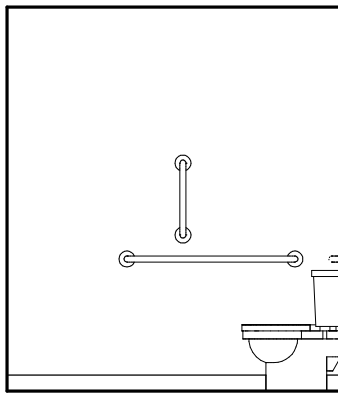
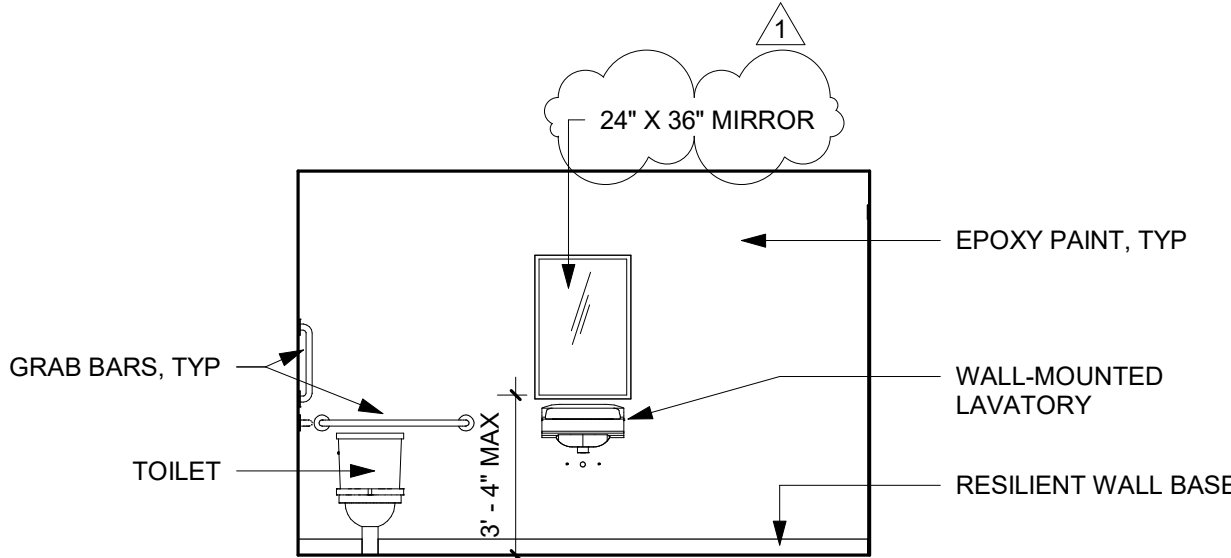
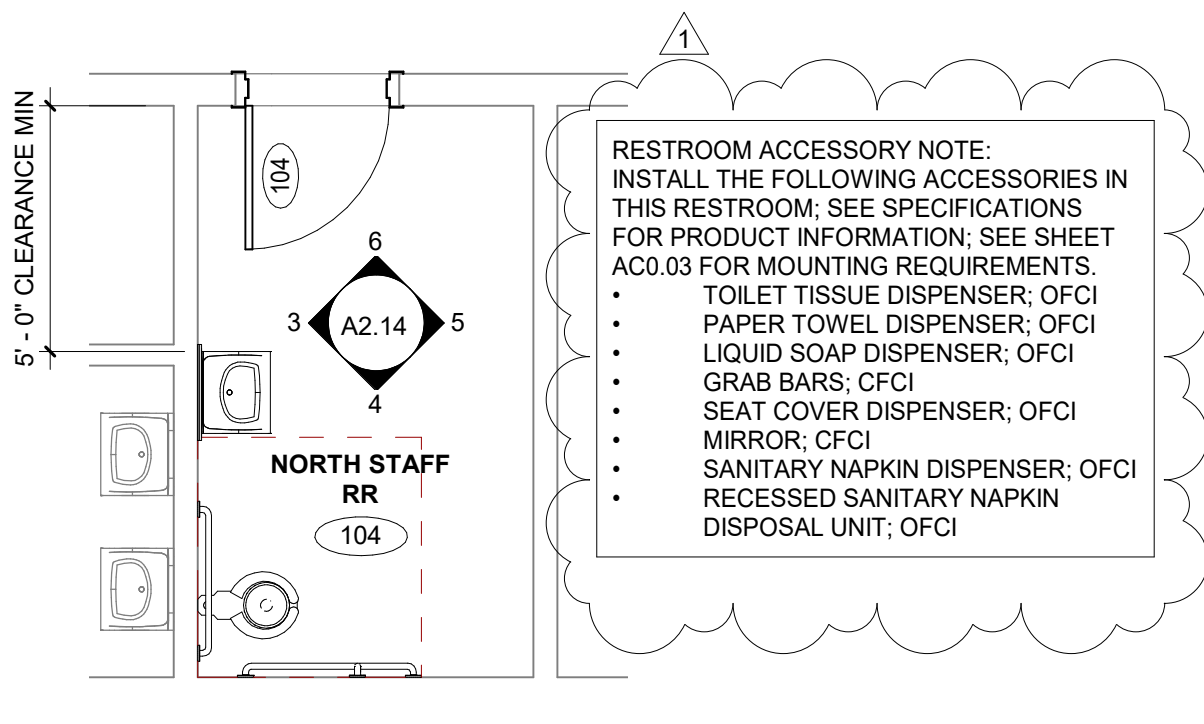
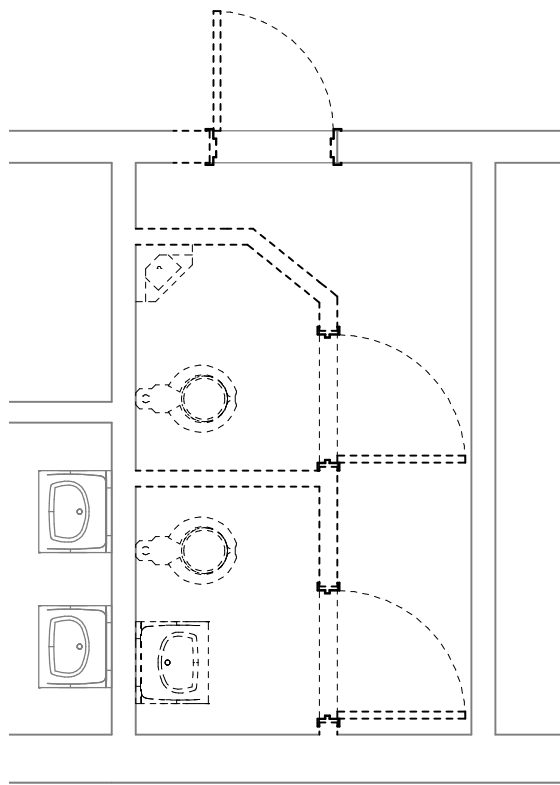


PART 3 - EXECUTION

3.01 INSTALLATION

- A. Install accessories according to manufacturers' written instructions, using fasteners appropriate to substrate indicated and recommended by unit manufacturer. Install units level, plumb, and firmly anchored in locations and at heights indicated.
- B. Grab Bars: Install to withstand a downward load of at least 250 lbf when tested according to ASTM F 446.

END OF SECTION 10 28 00

A	<div>1</div>  <div>6 STAFF RR - ELEVATION - NORTH</div> <div><div>0'1'2'4'</div><div>1/4" = 1'-0" @ FULL SIZE</div></div>	<div>2</div>  <div>5 STAFF RR - ELEVATION - EAST</div> <div><div>0'1'2'4'</div><div>1/4" = 1'-0" @ FULL SIZE</div></div>	<div>3</div>  <div>4 STAFF RR - ELEVATION - SOUTH</div> <div><div>0'1'2'4'</div><div>1/4" = 1'-0" @ FULL SIZE</div></div>	<div>4</div>  <div>3 STAFF RR - ELEVATION - WEST</div> <div><div>0'1'2'4'</div><div>1/4" = 1'-0" @ FULL SIZE</div></div>	<div>5</div> <div>6</div>  <div>1 STAFF RESTROOM FLOOR PLAN</div> <div><div>0'1'2'4'</div><div>1/4" = 1'-0" @ FULL SIZE</div></div>	<div><div><div><div>Stamp</div><div><div><div>#</div><div>Date</div><div>Description</div></div><div><div>1</div><div>2023-09-20</div><div>Addendum #1</div></div><div><div>2</div><div>3</div><div>4</div><div>5</div><div>6</div><div>7</div><div>8</div><div>9</div><div>10</div><div>11</div><div>12</div><div>13</div><div>14</div><div>15</div><div>16</div><div>17</div><div>18</div><div>19</div><div>20</div><div>21</div><div>22</div><div>23</div><div>24</div><div>25</div><div>26</div><div>27</div><div>28</div><div>29</div><div>30</div><div>31</div><div>32</div><div>33</div><div>34</div><div>35</div><div>36</div><div>37</div><div>38</div><div>39</div><div>40</div><div>41</div><div>42</div><div>43</div><div>44</div><div>45</div><div>46</div><div>47</div><div>48</div><div>49</div><div>50</div><div>51</div><div>52</div><div>53</div><div>54</div><div>55</div><div>56</div><div>57</div><div>58</div><div>59</div><div>60</div><div>61</div><div>62</div><div>63</div><div>64</div><div>65</div><div>66</div><div>67</div><div>68</div><div>69</div><div>70</div><div>71</div><div>72</div><div>73</div><div>74</div><div>75</div><div>76</div><div>77</div><div>78</div><div>79</div><div>80</div><div>81</div><div>82</div><div>83</div><div>84</div><div>85</div><div>86</div><div>87</div><div>88</div><div>89</div><div>90</div><div>91</div><div>92</div><div>93</div><div>94</div><div>95</div><div>96</div><div>97</div><div>98</div><div>99</div><div>100</div></div></div></div></div></div>
	B	C	D	<div>2</div>  <div>2 STAFF RESTROOM DEMO PLAN</div> <div><div>0'1'2'4'</div><div>1/4" = 1'-0" @ FULL SIZE</div></div>	<div><div><div><div>Stamp</div><div><div><div>#</div><div>Date</div><div>Description</div></div><div><div>1</div><div>2023-09-20</div><div>Addendum #1</div></div><div><div>2</div><div>3</div><div>4</div><div>5</div><div>6</div><div>7</div><div>8</div><div>9</div><div>10</div><div>11</div><div>12</div><div>13</div><div>14</div><div>15</div><div>16</div><div>17</div><div>18</div><div>19</div><div>20</div><div>21</div><div>22</div><div>23</div><div>24</div><div>25</div><div>26</div><div>27</div><div>28</div><div>29</div><div>30</div><div>31</div><div>32</div><div>33</div><div>34</div><div>35</div><div>36</div><div>37</div><div>38</div><div>39</div><div>40</div><div>41</div><div>42</div><div>43</div><div>44</div><div>45</div><div>46</div><div>47</div><div>48</div><div>49</div><div>50</div><div>51</div><div>52</div><div>53</div><div>54</div><div>55</div><div>56</div><div>57</div><div>58</div><div>59</div><div>60</div><div>61</div><div>62</div><div>63</div><div>64</div><div>65</div><div>66</div><div>67</div><div>68</div><div>69</div><div>70</div><div>71</div><div>72</div><div>73</div><div>74</div><div>75</div><div>76</div><div>77</div><div>78</div><div>79</div><div>80</div><div>81</div><div>82</div><div>83</div><div>84</div><div>85</div><div>86</div><div>87</div><div>88</div><div>89</div><div>90</div><div>91</div><div>92</div><div>93</div><div>94</div><div>95</div><div>96</div><div>97</div><div>98</div><div>99</div><div>100</div></div></div></div></div></div>	
<div><div><div><div>Stamp</div><div><div><div>#</div><div>Date</div><div>Description</div></div><div><div>1</div><div>2023-09-20</div><div>Addendum #1</div></div><div><div>2</div><div>3</div><div>4</div><div>5</div><div>6</div><div>7</div><div>8</div><div>9</div><div>10</div><div>11</div><div>12</div><div>13</div><div>14</div><div>15</div><div>16</div><div>17</div><div>18</div><div>19</div><div>20</div><div>21</div><div>22</div><div>23</div><div>24</div><div>25</div><div>26</div><div>27</div><div>28</div><div>29</div><div>30</div><div>31</div><div>32</div><div>33</div><div>34</div><div>35</div><div>36</div><div>37</div><div>38</div><div>39</div><div>40</div><div>41</div><div>42</div><div>43</div><div>44</div><div>45</div><div>46</div><div>47</div><div>48</div><div>49</div><div>50</div><div>51</div><div>52</div><div>53</div><div>54</div><div>55</div><div>56</div><div>57</div><div>58</div><div>59</div><div>60</div><div>61</div><div>62</div><div>63</div><div>64</div><div>65</div><div>66</div><div>67</div><div>68</div><div>69</div><div>70</div><div>71</div><div>72</div><div>73</div><div>74</div><div>75</div><div>76</div><div>77</div><div>78</div><div>79</div><div>80</div><div>81</div><div>82</div><div>83</div><div>84</div><div>85</div><div>86</div><div>87</div><div>88</div><div>89</div><div>90</div><div>91</div><div>92</div><div>93</div><div>94</div><div>95</div><div>96</div><div>97</div><div>98</div><div>99</div><div>100</div></div></div></div></div></div>						

Stamp

#

Date

Description

1

2023-09-20

Addendum #1

2

3

4

5

6

7

8

9

10

11

12

13

14

15

16

17

18

19

20

21

22

23

24

25

26

27

28

29

30

31

32

33

34

35

36

37

38

39

40

41

42

43

44

45

46

47

48

49

50

51

52

53

54

55

56

57

58

59

60

61

62

63

64

65

66

67

68

69

70

71

72

73

74

75

76

77

78

79

80

81

82

83

84

85

86

87

88

89

90

91

92

93

94

95

96

97

98

99

100

Stamp

#

Date

Description

1

2023-09-20

Addendum #1

2

3

4

5

6

7

8

9

10

11

12

13

14

15

16

17

18

19

20

21

22

23

24

25

26

27

28

29

30

31

32

33

34

35

36

37

38

39

40

41

42

43

44

45

46

47

48

49

50

51

52

53

54

55

56

57

58

59

60

61

62

63

64

65

66

67

68

69

70

71

72

73

74

75

76

77

78

79

80

81

82

83

84

85

86

87

88

89

90

91

92

93

94

95

96

97

98

99

100

Stamp

#

Date

Description

1

2023-09-20

Addendum #1

2

3

4

5

6

7

8

9

10

11

12

13

14

15

16

17

18

19

20

21

22

23

24

25

26

27

28

29

30

31

32

33

34

35

36

37

38

39

40

41

42

43

44

45

46

47

48

49

50

51

52

53

54

55

56

57

58

59

60

61

62

63

64

65

66

67

68

69

70

71

72

73

74

75

76

77

78

79

80

81

82

83

84

85

86

87

88

89

90

91

92

93

94

95

96

97

98

99

100

Stamp

#

Date

Description

1

2023-09-20

Addendum #1

2

3

4

5

6

7

8

9

10

11

12

13

14

15

16

17

18

19

20

21

22

23

24

25

26

27

28

29

30

31

32

33

34

35

36

37

38

39

40

41

42

43

44

45

46

47

48

49

50

51

52

53

54

55

56

57

58

59

60

61

62

63

64

65

66

67

68

69

70

71

72

73

74

75

76

77

78

79

80

81

82

83

84

85

86

87

88

89

90

91

92

93

94

95

96

97

98

99

100

Stamp

#

Date

Description

1

2023-09-20

Addendum #1

2

3

4

5

6

7

8

9

10

11

12

13

14

15

16

17

18

19

20

21

22

23

24

25

26

27

28

29

30

31

32

33

34

35

36

37

38

39

40

41

42

43

44

45

46

47

48

49

50

51

52

53

54

55

56

57

58

59

60

61

62

63

64

65

66

67

68

69

70

71

72

73

74

75

76

77

78

79

80

81

82

83

84

85

86

87

88

89

90

91

92

93

94

95

96

97

98

99

100

Stamp

#

Date

Description

1

2023-09-20

Addendum #1

2

3

4

5

6

7

8

9

10

11

12

13

14

15

16

17

18

19

20

21

22

23

24

25

26

27

28

29

30

31

32

33

34

35

36

37

38

39

40

41

42

43

44

45

46

47

48

49

50

51

52

53

54

55

56

57

58

59

60

61

62

63

64

65

66

67

68

69

70

71

72

73

74

75

76

77

78

79

80

81

82

83

84

85

86

87

88

89

90

91

92

93

94

95

96

97

98

99

100

Stamp

#

Date

Description

1

2023-09-20

Addendum #1

2

3

4

5

6

7

8

9

10

11

12

13

14

15

16

17

18

19

20

21

22

23

24

25

26

27

28

29

30

31

32

33

34

35

36

37

38

39

40

41

42

43

44

45

46

47

48

49

50

51

52

53

54

55

56

57

58

59

60

61

62

63

64

65

66

67

68

69

70

71

72

73

74

75

76

77

78

79

80

81

82

83

84

85

86

87

88

89

90

91

92

93

94

95

96

97

98

99

100

Stamp

#

Date

Description

1

2023-09-20

Addendum #1

2

3

4

5

6

7

8

9

10

11

12

13

14

15

16

17

18

19

20

21

22

23

24

25

26

27

28

29

30

31

32

33

34

35

36

37

38

39

40

41

42

43

44

45

46

47

48

49

50

51

52

53

54

55

56

57

58

59

60

61

62

63

64

65

66

67

68

69

70

71

72

73

74

75

76

77

78

79

80

81

82

83

84

85

86

87

88

89

90

91

92

93

94

95

96

97

98

99

100

Stamp

#

Date

Description

1

2023-09-20

Addendum #1

2

3

4

5

6

7

8

9

10

11

12

13

14

15

16

17

18

19

20

21

22

23

24

25

26

27

28

29

30

31

32

33

34

35

36

37

38

39

40

41

42

43

44

45

46

47

48

49

50

51

52

53

54

55

56

57

58

59

60

61

62

63

64

65

66

67

68

69

70

71

72

73

74

75

76

77

78

79

80

81

82

83

84

85

86

87

88

89

90

91

92

93

94

95

96

97

98

99

100

Stamp

#

Date

Description

1

2023-09-20

Addendum #1

2

3

4

5

6

7

8

9

10

11

12

13

14

15

16

17

18

19

20

21

22

23

24

25

26

27

28

29

30

31

32

33

34

35

36

37

38

39

40

41

42

43

44

45

46

47

48

49

50

51

52

53

54

55

56

57

58

59

60

61

62

63

64

65

66

67

68

69

70

71

72

73

74

75

76

77

78

79

80

81

82

83

84

85

86

87

88

89

90

91

92

93

94

95

96

97

98

99

100

Stamp

#

Date

Description

1

2023-09-20

Addendum #1

2

3

4

5

6

7

8

9

10

11

12

13

14

15

16

17

18

19

20

21

22

23

24

25

26

27

28

29

30

31

32

33

34

35

36

37

38

39

40

41

42

43

44

45

46

47

48

49

50

51

52

53

54

55

56

57

58

59

60

61

62

63

64

65

66

67

68

69

70

71

72

73

74

75

76

77

78

79

80

81

82

83

84

85

86

87

88

89

90

91

92

93

94

95

96

97

98

99

100

Stamp

#

Date

Description

1

2023-09-20

Addendum #1

2

3

4

5

6

7

8

9

10

11

12

13

14

15

16

17

18

19

20

21

22

23

24

25

26

27

28

29

30

31

32

33

34

35

36

37

38

39

40

41

42

43

44

45

46

47

48

49

50

51

52

53

54

55

56

57

58

59

60

61

62

63

64

65

66

67

68

69

70

71

72

73

74

75

76

77

78

79

80

81

82

83

84

85

86

87

88

89

90

91

92

93

94

95

96

97

98

99

100

Stamp

#

Date

Description

1

2023-09-20

Addendum #1

2

3

4

5

6

7

8

9

10

11

12

13

14

15

16

17

18

19

20

21

22

23

24

25

26

27

28

29

30

31

32

33

34

35

36

37

38

39

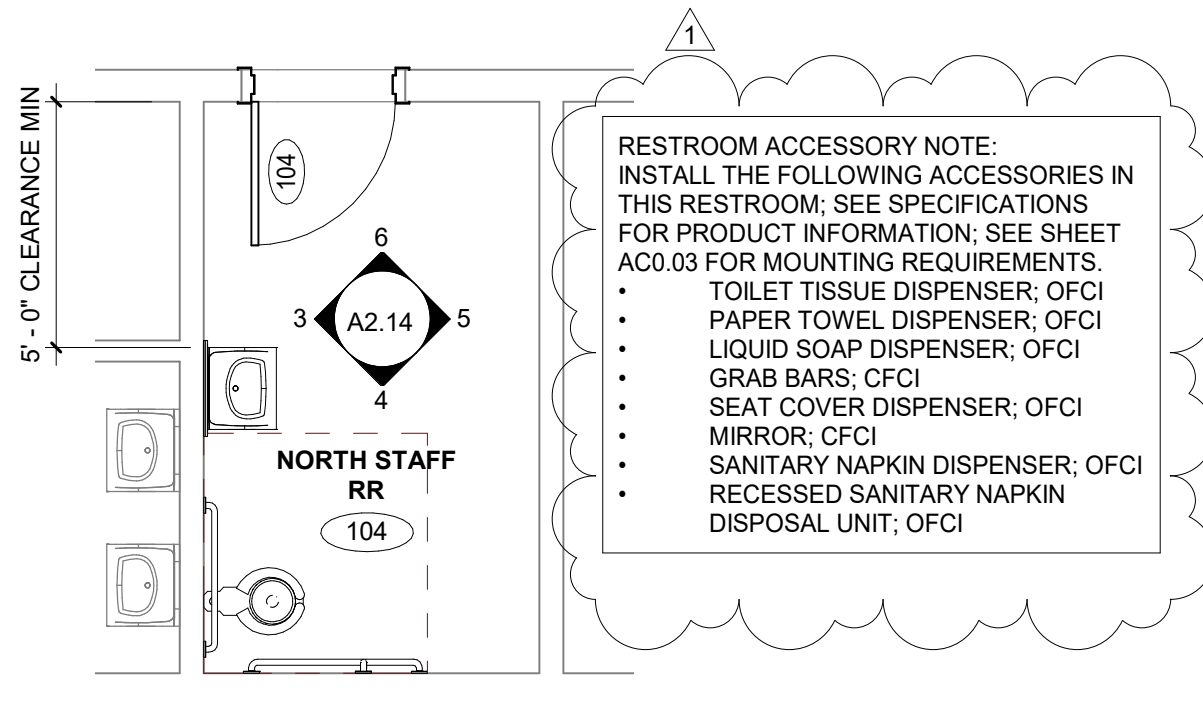
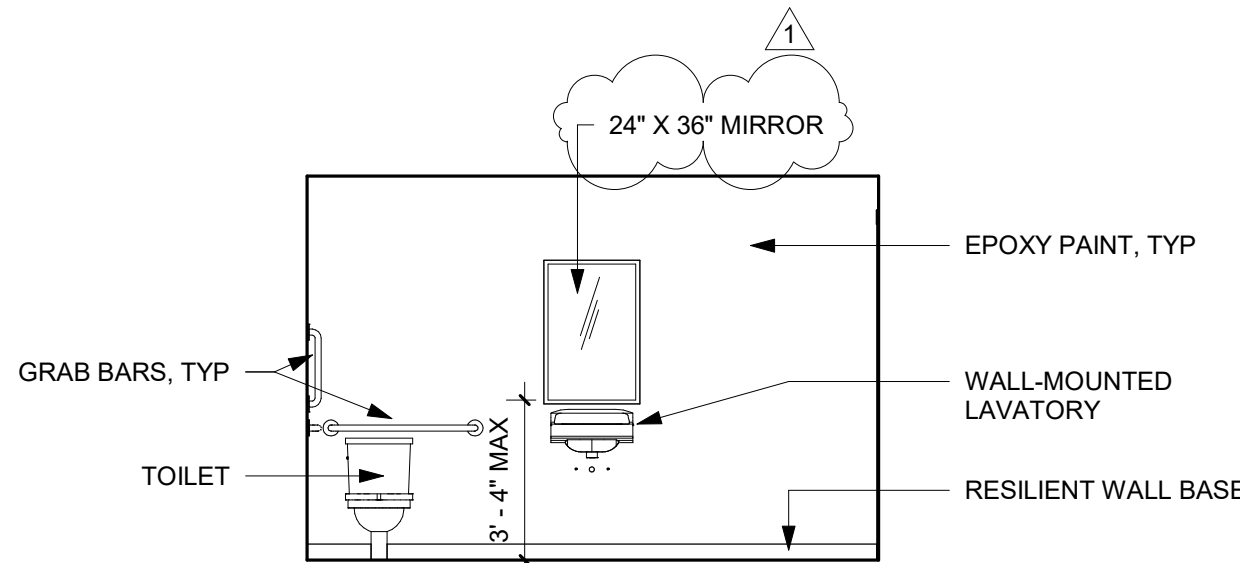
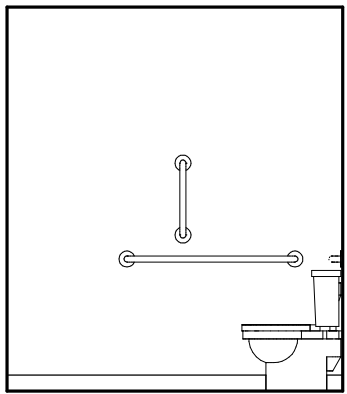
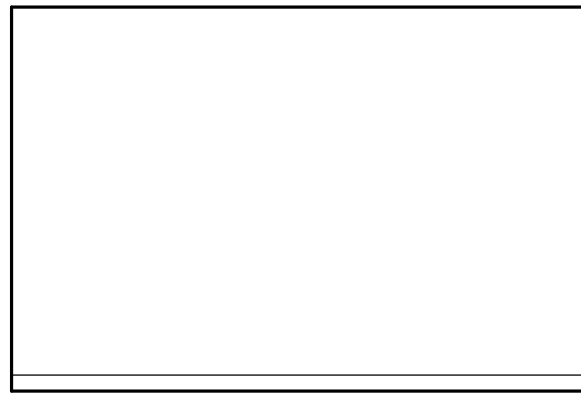
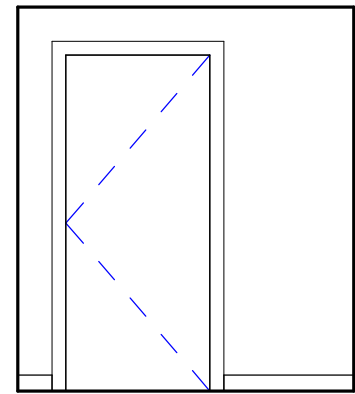
40

41

42

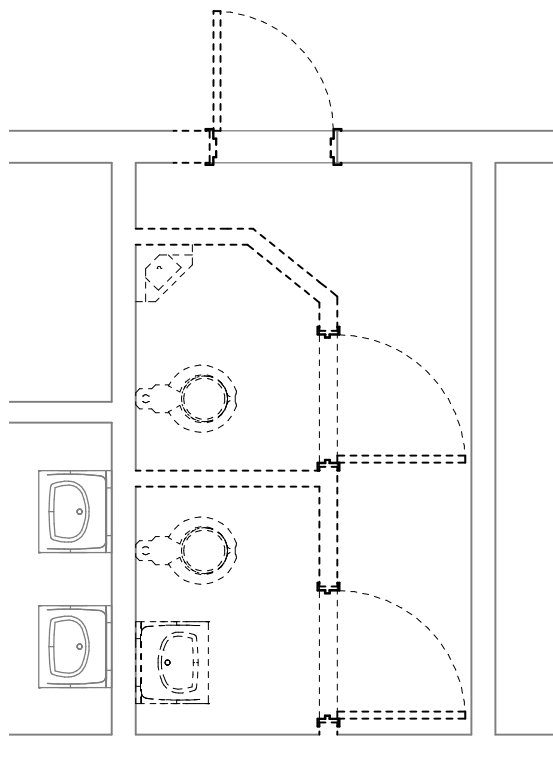
43

44



RESTROOM ACCESSORY NOTE:  
INSTALL THE FOLLOWING ACCESSORIES IN  
THIS RESTROOM; SEE SPECIFICATIONS  
FOR PRODUCT INFORMATION; SEE SHEET  
AC0.03 FOR MOUNTING REQUIREMENTS.

- TOILET TISSUE DISPENSER; OFCI
- PAPER TOWEL DISPENSER; OFCI
- LIQUID SOAP DISPENSER; OFCI
- GRAB BARS; CFCJ
- SEAT COVER DISPENSER; OFCI
- MIRROR; CFCJ
- SANITARY NAPKIN DISPENSER; OFCI
- RECESSED SANITARY NAPKIN DISPOSAL UNIT; OFCI



DEMOLITION NOTES: STAFF RESTROOM

- REMOVE ALL INTERIOR WALLS SHOWN DASHED.
- REMOVE RESTROOM WALLS SHOWN DASHED.
- REMOVE ALL PLUMBING FIXTURES, CAP OR EXTEND TO NEW FIXTURES PER PLUMBING DRAWINGS.
- REMOVE ALL WALL BASE
- REMOVE AND SALVAGE ALL WALL-MOUNTED RESTROOM ACCESSORIES.
- REMOVE ALL TILE AND SHEET FLOOR FINISH MATERIAL.
- REMOVE ALL LIGHT FIXTURES
- REMOVE HALLWAY DOOR AND ADJACENT WALL AS REQUIRED TO INSTALL NEW DOOR.

DRAWING REVISIONS		
#	Date	Description
1	2023-09-20	Addendum #1

MADRAS ELEMENTARY SCHOOL  
IMPROVEMENTS

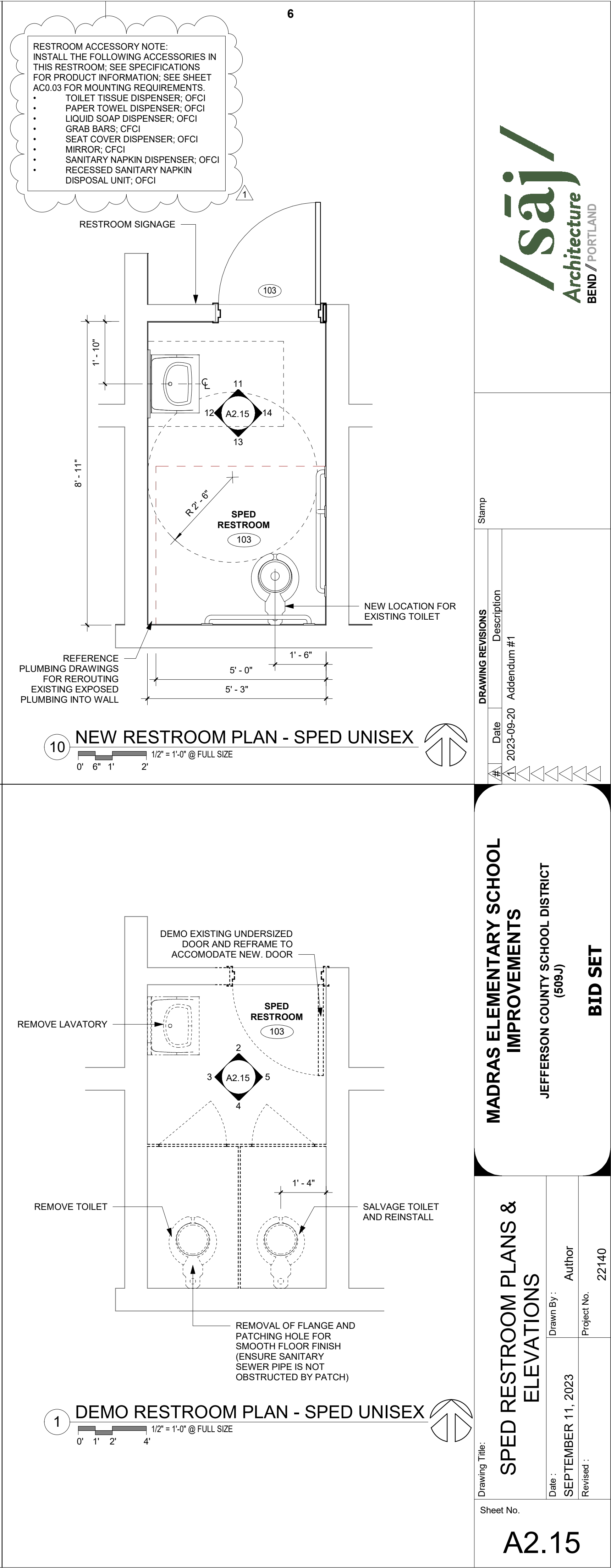
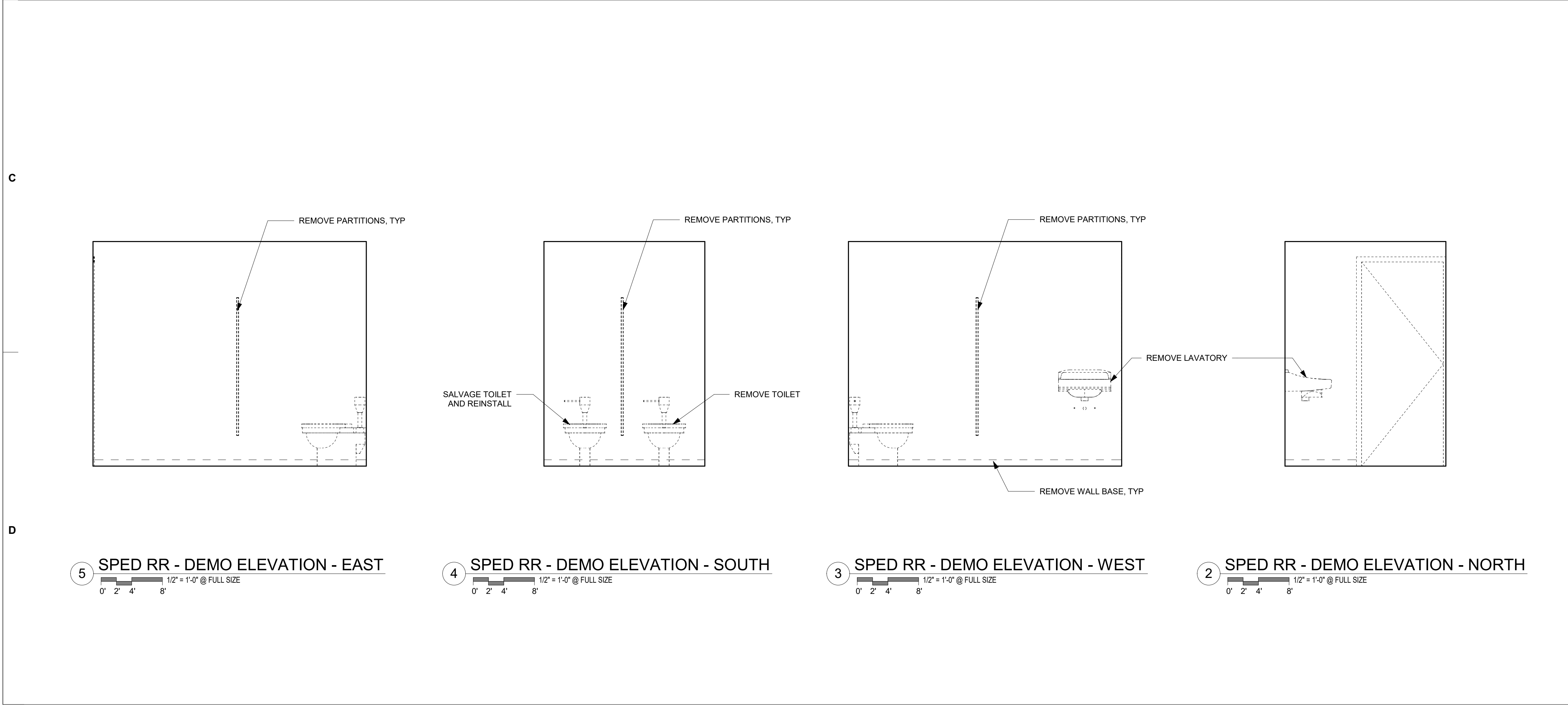
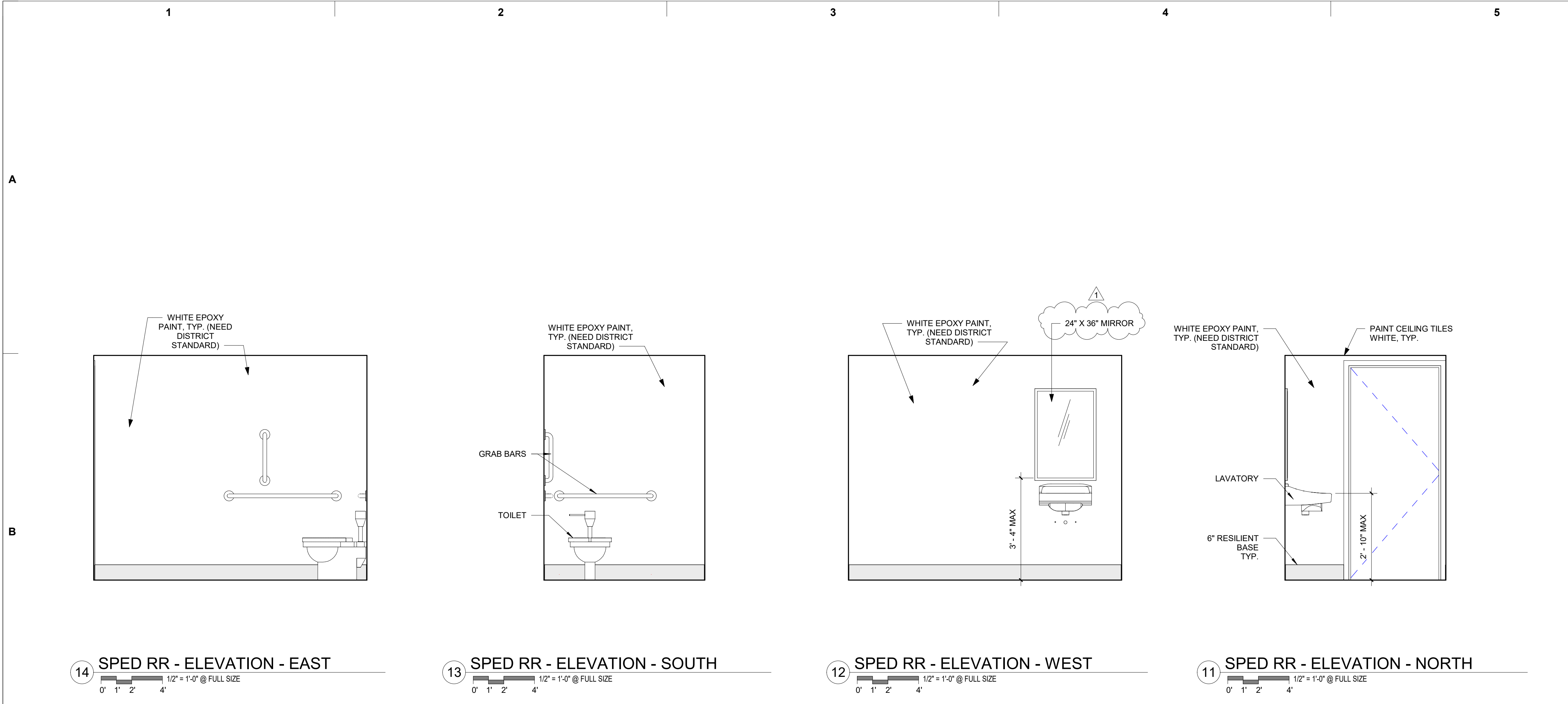
JEFFERSON COUNTY SCHOOL DISTRICT  
(509-J)

BID SET

Drawing Title:		ACCESSIBLE SINGLE-USE RESTROOM
Date :	SEPTEMBER 11, 2023	
Revised :		
Drawn By :		LOG
Project No.		22140

Sheet No.

A2.14



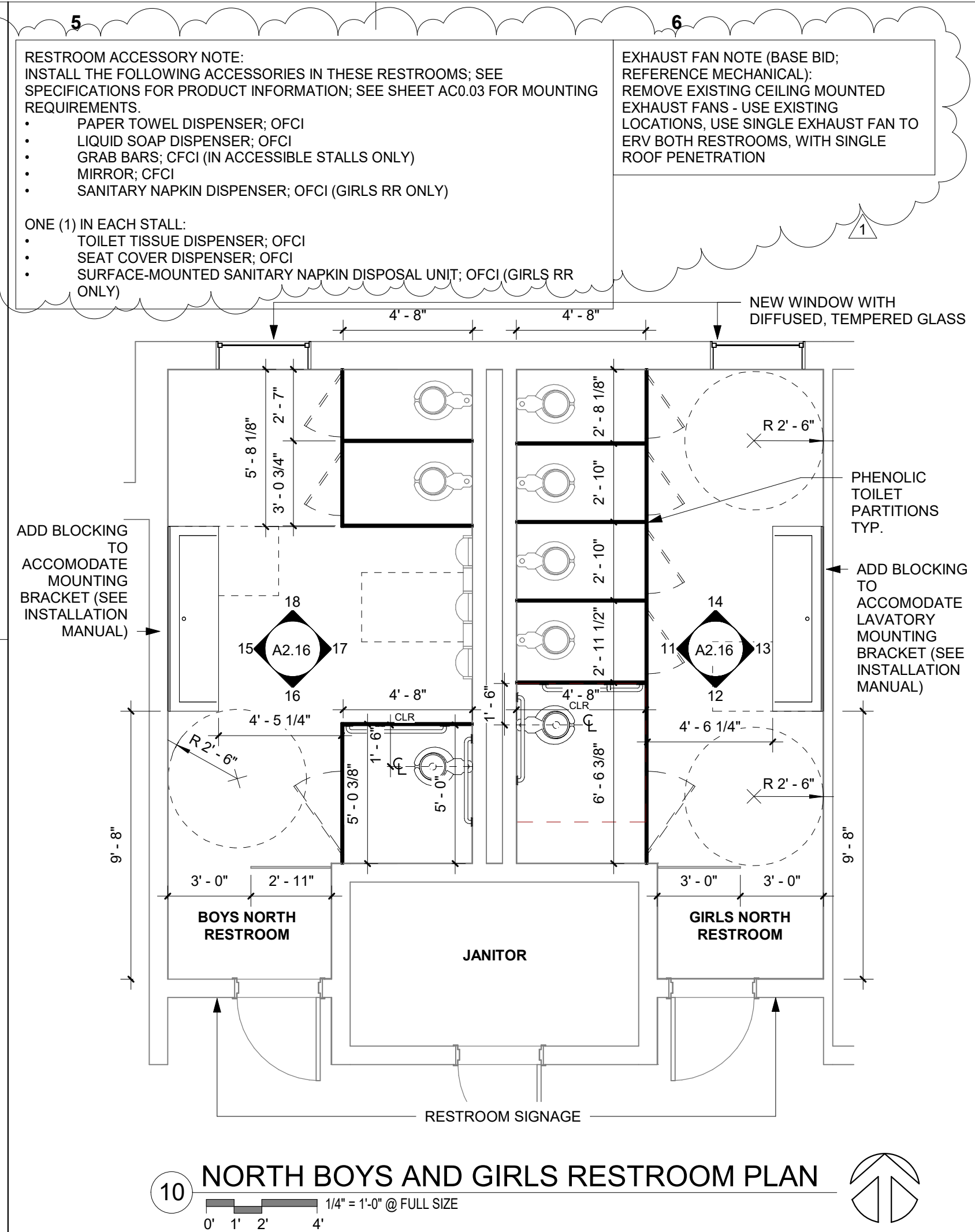
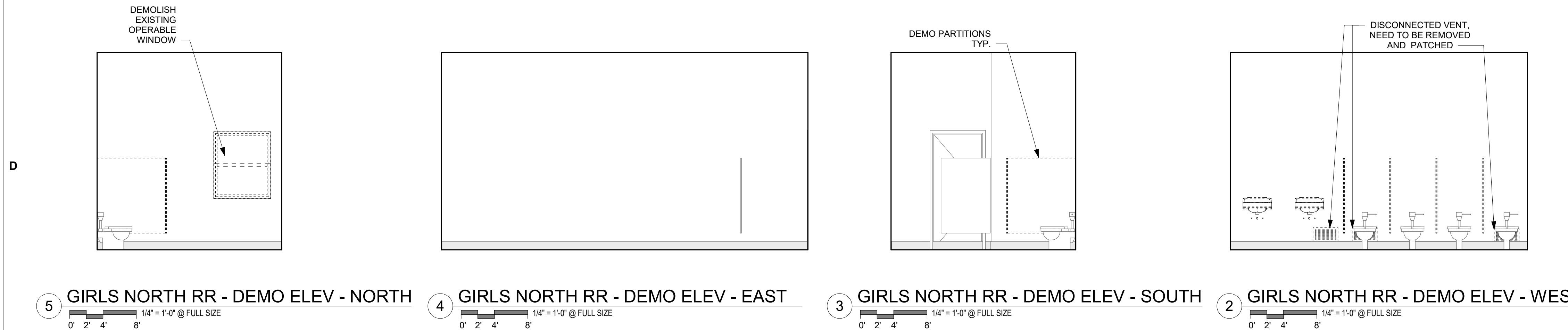
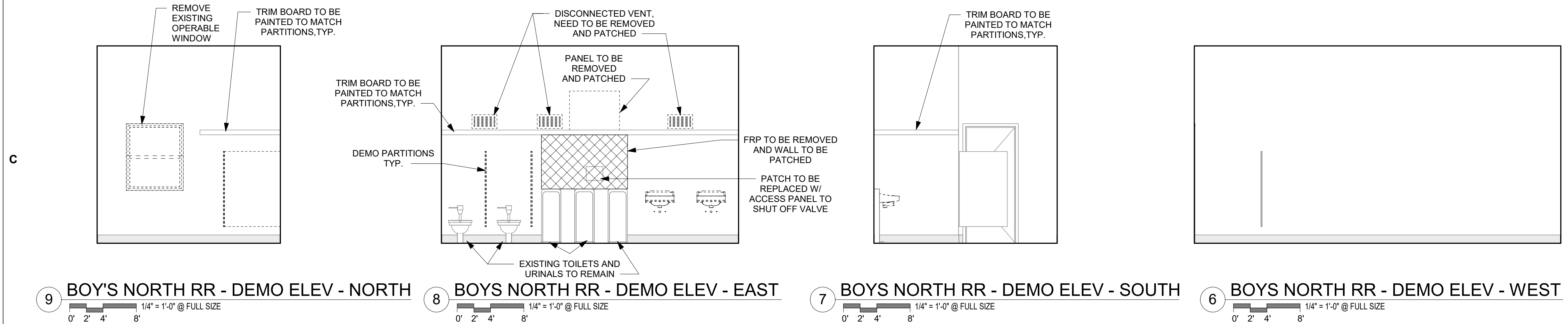
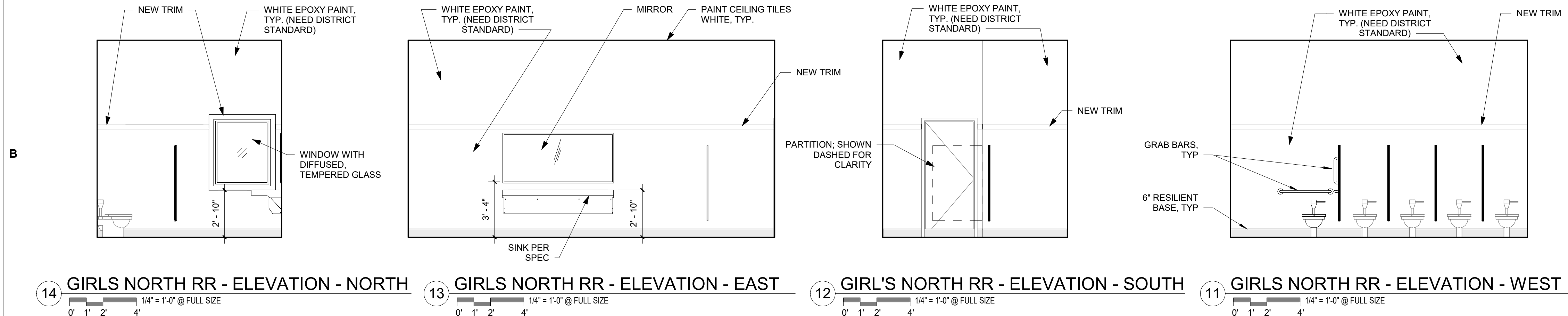
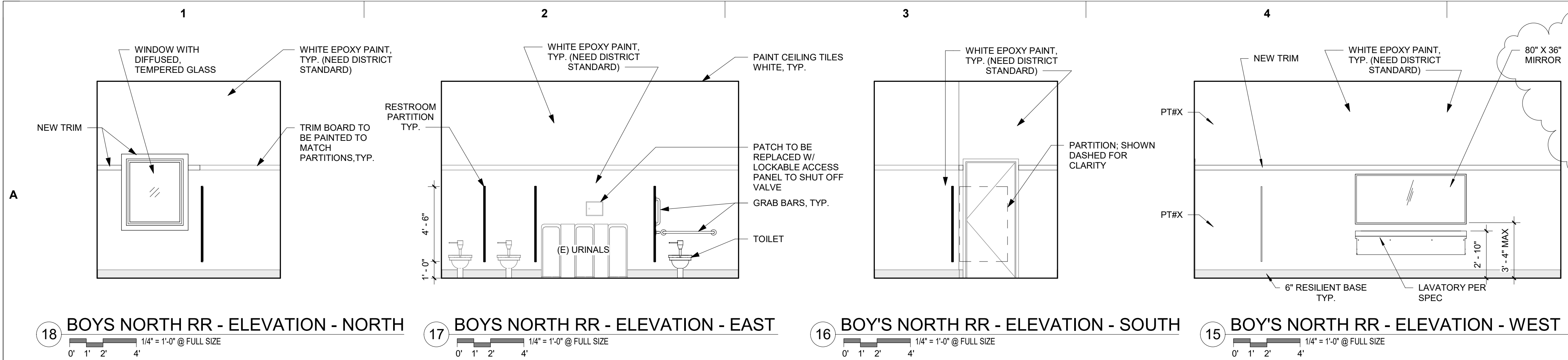
DRAWING REVISIONS	
#	Description
1	Addendum #1
Stamp	
Date	2023-09-20
Author	
Project No.	
Sheet No.	

**MADRAS ELEMENTARY SCHOOL IMPROVEMENTS**  
JEFFERSON COUNTY SCHOOL DISTRICT (509J)  
**BID SET**

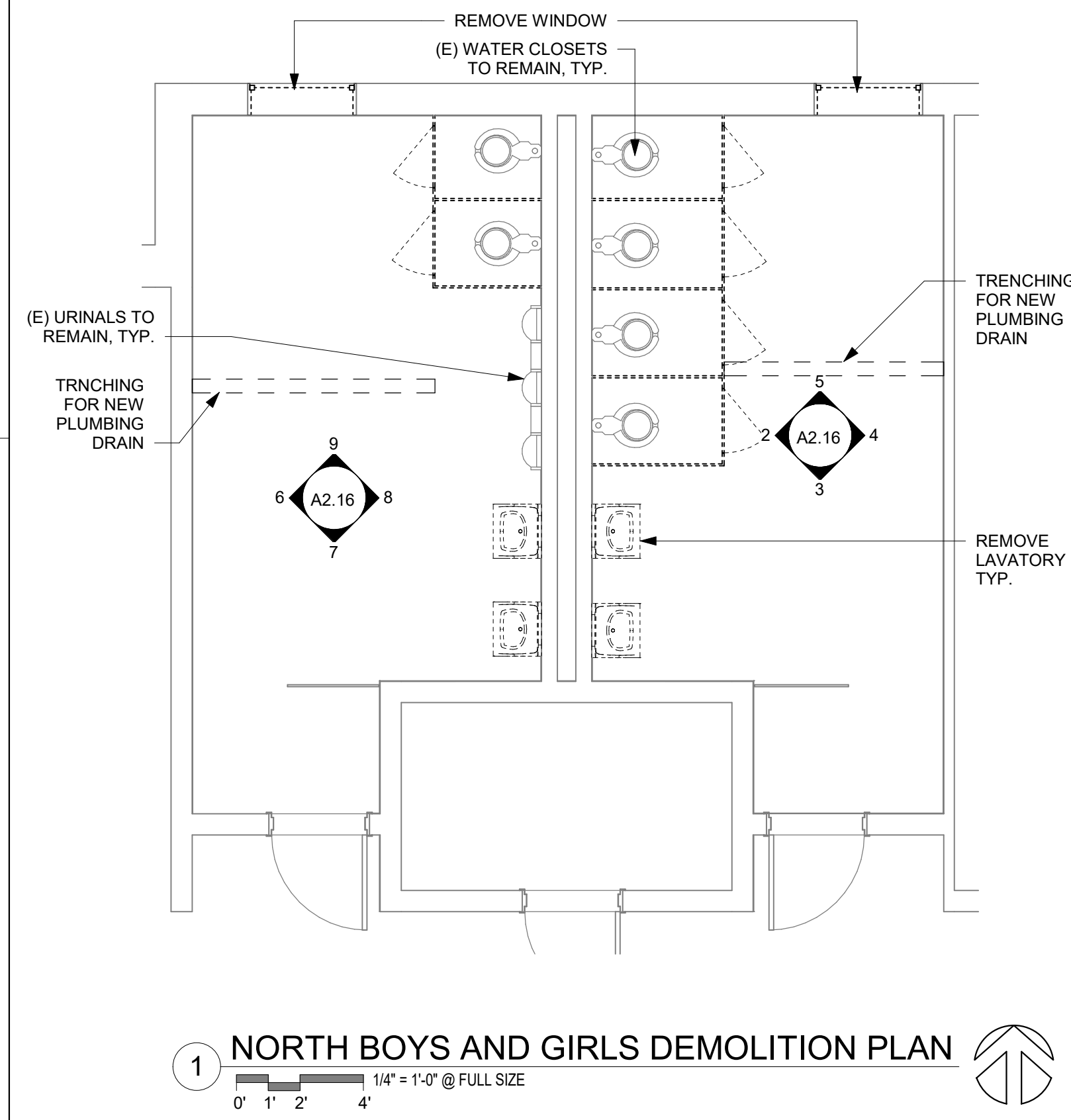
SPED RESTROOM PLANS & ELEVATIONS	
Date	SEPTEMBER 11, 2023
Drawn By	Author
Revised	Project No.
22140	
A2.15	



9/19/2023 4:21:25 PM



BID ALTERNATE #2



BID ALTERNATE #2

**/saj/**  
Architecture  
BEND / PORTLAND

Stamp

DRAWING REVISIONS	
#	Description
1	Addendum #1

Date: 2023-09-20

**MADRAS ELEMENTARY SCHOOL IMPROVEMENTS**  
JEFFERSON COUNTY SCHOOL DISTRICT (509J)

**BID SET**

Drawing Title: **NE WING RESTROOM PLANS & ELEVATIONS**

Date: SEPTEMBER 11, 2023  
Drawn By: LCG  
Project No. 221140

Sheet No. **A2.16**

SAJ ARCHITECTURE

